



HARVEY ROBINSON

Guide Price

£375,000

Downside Gardens

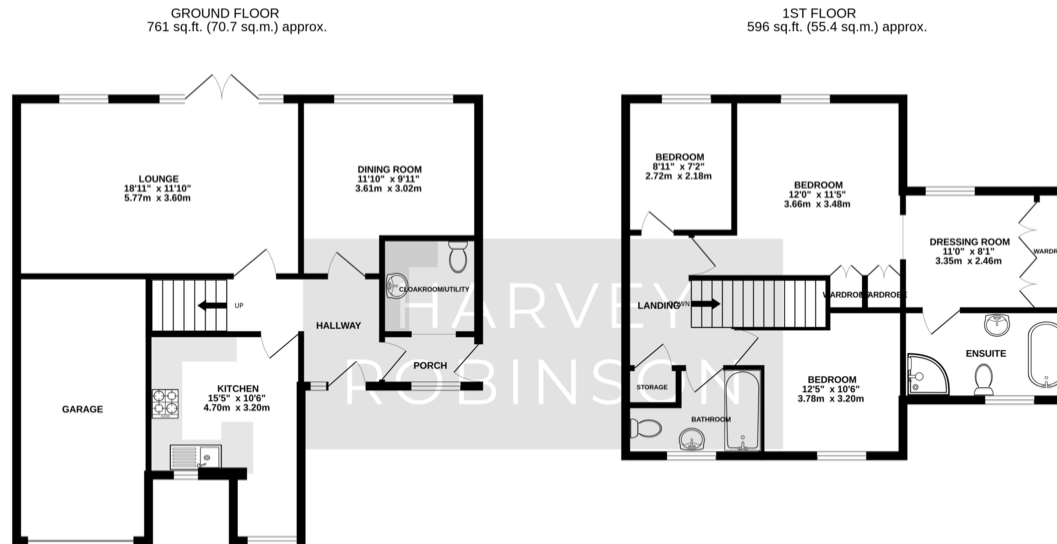
Potton, SG19 2RE

PROPERTY SUMMARY

We are delighted to offer for sale this beautifully presented three bedroom semi-detached family home, ideally situated in the heart of the popular town of Potton, Bedfordshire.







TOTAL FLOOR AREA: 1357 sq.ft. (126.1 sq.m.) approx.
 Made with Metropix ©2025

FAQs

Type Here

Energy Efficiency Rating		
	Current	Potential
Very energy efficient - lower running costs		
(92+) A		
(81-91) B		84
(69-80) C	73	
(55-68) D		

Agents Note: Whilst every care has been taken to prepare these particulars, they are for guidance purposes only. All measurements are approximate and are for general guidance purposes only and whilst every care has been taken to ensure their accuracy, they should not be relied upon and potential buyers/tenants are advised to recheck the measurements

HARVEY ROBINSON

OFFICE ADDRESS

5 Purcell Place, Sullivan Court,
 Biggleswade, Bedfordshire,
 SG18 8SX

CONTACT

01767 660770
 biggleswade@harveyrobinson.co.uk
 www.harveyrobinson.co.uk