



HARVEY ROBINSON

Guide Price

£140,000

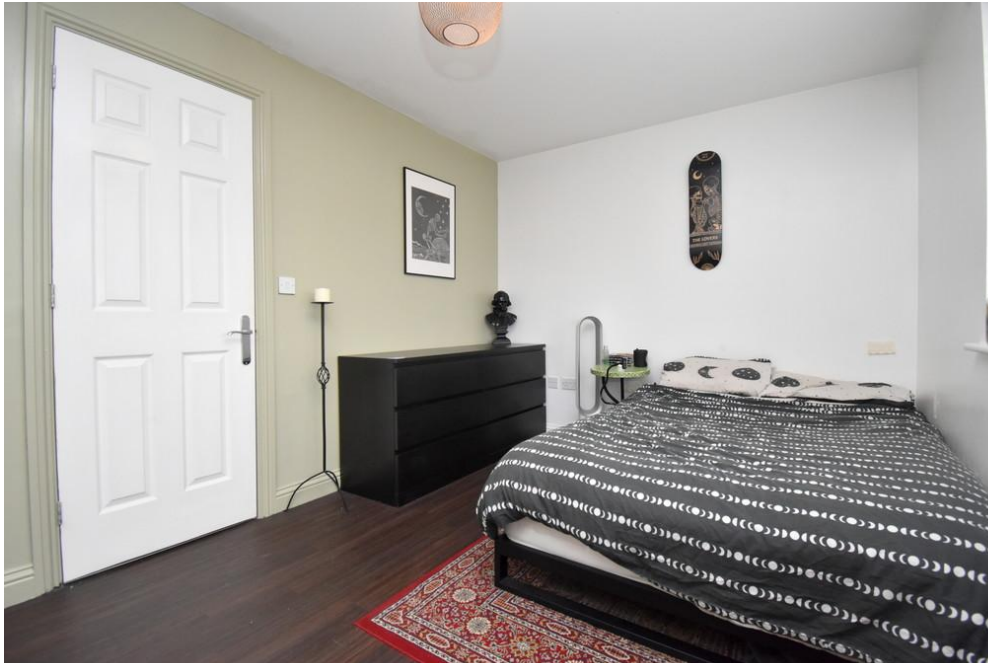
12 Strawberry Fields

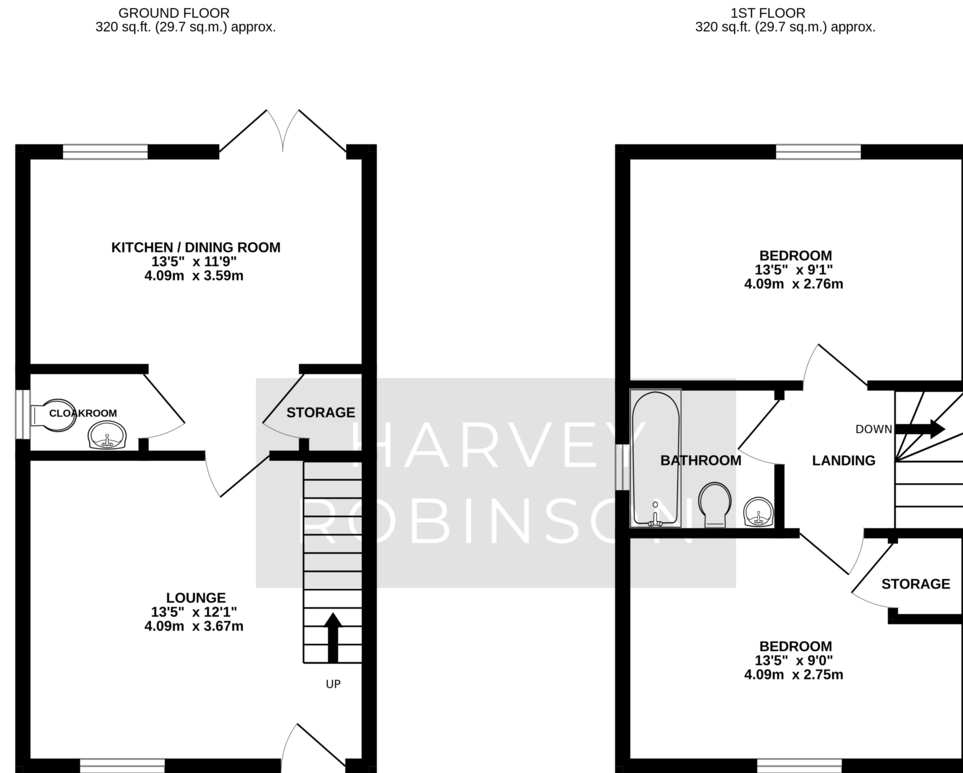
Great Barford, MK44 3BQ

## PROPERTY SUMMARY

We are delighted to offer for sale on a 50% SHARED OWNERSHIP basis this beautifully presented two bedroom end of terrace family home located in the sought after village of Great Barford.







TOTAL FLOOR AREA: 640 sq.ft. (59.5 sq.m.) approx.  
 Made with Metropix ©2024

## FAQs

Type Here

Energy Efficiency Rating		
	Current	Potential
<i>Very energy efficient - lower running costs</i>		
(92+) <b>A</b>		
(81-91) <b>B</b>		<b>90</b>
(69-80) <b>C</b>	<b>75</b>	
(55-68) <b>D</b>		

Agents Note: Whilst every care has been taken to prepare these particulars, they are for guidance purposes only. All measurements are approximate and are for general guidance purposes only and whilst every care has been taken to ensure their accuracy, they should not be relied upon and potential buyers/tenants are advised to recheck the measurements

HARVEY ROBINSON

### OFFICE ADDRESS

5 Purcell Place, Sullivan Court,  
 Biggleswade, Bedfordshire,  
 SG18 8SX

### CONTACT

01767 660770  
 biggleswade@harveyrobinson.co.uk  
 www.harveyrobinson.co.uk