



Town • Country • Coast



Venn Hill

Milton Abbot, Tavistock

Price Guide £240,000



2



1



1



G

Venn Hill

Milton Abbot, Tavistock

Offered with NO ONWARD CHAIN is this charming, fully renovated cottage nestled in the picturesque location of Milton Abbot, Tavistock. This delightful property boasts a cosy reception room, two inviting bedrooms, and a well-appointed bathroom, offering comfortable living spaces for you to enjoy.

As you step into this lovely house, you'll be greeted by modern living accommodation that perfectly blends with the traditional cottage feel. The secluded rear garden provides a peaceful retreat where you can relax and unwind while taking in the beautiful views of the surrounding countryside. The property has been renovated to a high standard and boasts a fully fitted kitchen with integrated cooker and fridge/freezer.

Situated in a rural location, this property offers a tranquil lifestyle away from the hustle and bustle of town and city life, allowing you to immerse yourself in the serenity of the countryside. Whether you're looking for a weekend getaway or a permanent residence, this cottage is sure to capture your heart with its idyllic charm.

Don't miss out on the opportunity to own a piece of countryside paradise in this enchanting location. Contact us today to arrange a viewing and experience the beauty of rural living at its finest.





Living Room

12'32 x 9'05 (3.66m x 2.87m)

Kitchen

12'06 x 7'00 (3.81m x 2.13m)

Bedroom One

12'87 x 7'39 (3.66m x 2.13m)

Bedroom Two

12'59 x 6'24 (3.66m x 1.83m)

Bathroom

8'27 x 6'99 (2.44m x 1.83m)

EPC

1/G

Tenure

Freehold

Services

Mains electricity, water (metered) and drainage.

Council Tax Band

B

Situation

The pretty West Devon village of Milton Abbot has a primary school, well respected public house and thriving village community spirit and village hall. A more comprehensive range of shopping facilities can be found at the award winning market town of Tavistock nearby. Tavistock is an ancient stannary and market town located on the edge of the Dartmoor National Park. The town offers a wide range of local and national shops whilst also boasting the renowned pannier market, riverside park, leisure centre and theatre. The area is excellent for visitors both to see the town itself and for exploring the surrounding countryside, the wild Dartmoor scenery and the many neighbouring pretty villages and a variety of National Trust properties. There are exceptional educational facilities in both the state and private sector. The town itself has fantastic sporting facilities including, tennis courts, a bowls club, athletics track and various football pitches. For golf enthusiasts, there are excellent golf courses nearby, at Yelverton and Tavistock and St. Mellion. There are also opportunities to fish by arrangement on a number of local rivers, including the Walkham, Tavy and Tamar.

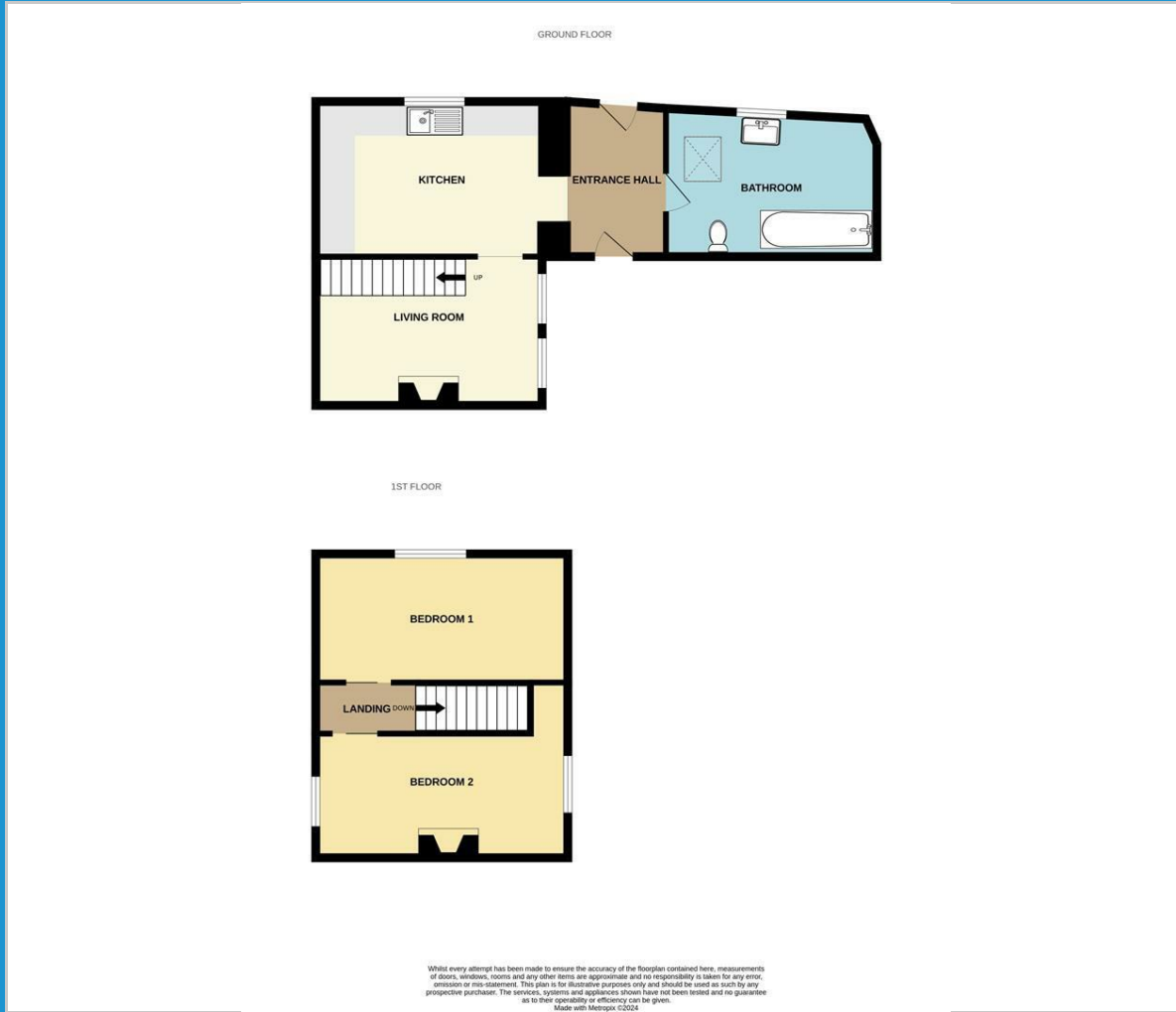
Directions

Coming from Tavistock, take the Launceston road towards Milton Abbot. Proceed along this road for about 7 miles until you reach the village. Turn left just before the church and follow the road down. The property will be found on your left hand side a short distance down here.

Agents Note

The property has a legal right of access over the neighbour's land to get to the entrance of the property.

Floor Plan



Viewing

Please contact our View Property Tavistock Office on 01822 614614 if you wish to arrange a viewing appointment for this property or require further information.

These particulars, whilst believed to be accurate are set out as a general outline only for guidance and do not constitute any part of an offer or contract. Intending purchasers should not rely on them as statements of representation of fact, but must satisfy themselves by inspection or otherwise as to their accuracy. No person in this firm's employment has the authority to make or give any representation or warranty in respect of the property.

Unit 1, The Old Dairy Paddons Row, Tavistock, Devon, PL19 0HF
 Tel: 01822 614614 Email: Tavy@viewproperty.org.uk www.viewproperty.org.uk

Area Map



Energy Efficiency Graph

