



Town • Country • Coast



Frensham Gardens

Plymouth

Offers In Excess Of £485,000





## Frensham Gardens

Plymouth

Nestled in the desirable Frensham Gardens, Glenholt, this charming detached house offers an exceptional opportunity for families seeking a spacious and well-presented home. Boasting four generously sized double bedrooms, this property is perfect for those who value comfort and space in a highly desirable position with close proximity to Plymouth.

Situated in a sought-after cul de sac, the location provides a peaceful environment while still being conveniently close to local amenities and transport links. The well-maintained interior of the house is sure to impress, offering a welcoming atmosphere that is both stylish and functional.

This property is ideal for families or anyone looking for a serene retreat in a vibrant community. With its ample living space and prime location, double garage with further parking for numerous vehicles and well proportioned rear gardens this home is not to be missed. Come and experience the charm of Frensham Gardens for yourself.







#### Entrance Porch

#### Entrance Hall

#### Living Room

16'0" max x 11'6" (4.88m max x 3.53m)

#### Dining Room

10'8 x 9'10 (3.25m x 3.00m)

#### Kitchen

16'4 x 9'9 (4.98m x 2.97m)

#### Utility Room

9'10 x 4'3 (3.00m x 1.30m)

#### First Floor Landing

#### Bedroom 1

12'2 x 14'6 shortening to 11'8 (3.71m x 4.42m shortening to 3.56m)

#### En-suite

6'8 x 5'8 (2.03m x 1.73m)

#### Bedroom 2

11'5 x 10'9 (3.48m x 3.28m)

#### Bedroom 3

10'10 x 8'6 (3.30m x 2.59m)

#### Bedroom 4

10'4 x 8'5 (widest) (3.15m x 2.57m (widest))

#### Bathroom

7'1 x 6' (2.16m x 1.83m)

#### Garage

17'5 x 17 (5.31m x 5.18m)

#### Tenure

Freehold

#### Services

Mains electricity, gas, drainage and metered water.

#### Council Tax Band

Plymouth City Council E

#### EPC

C/70

#### Situation

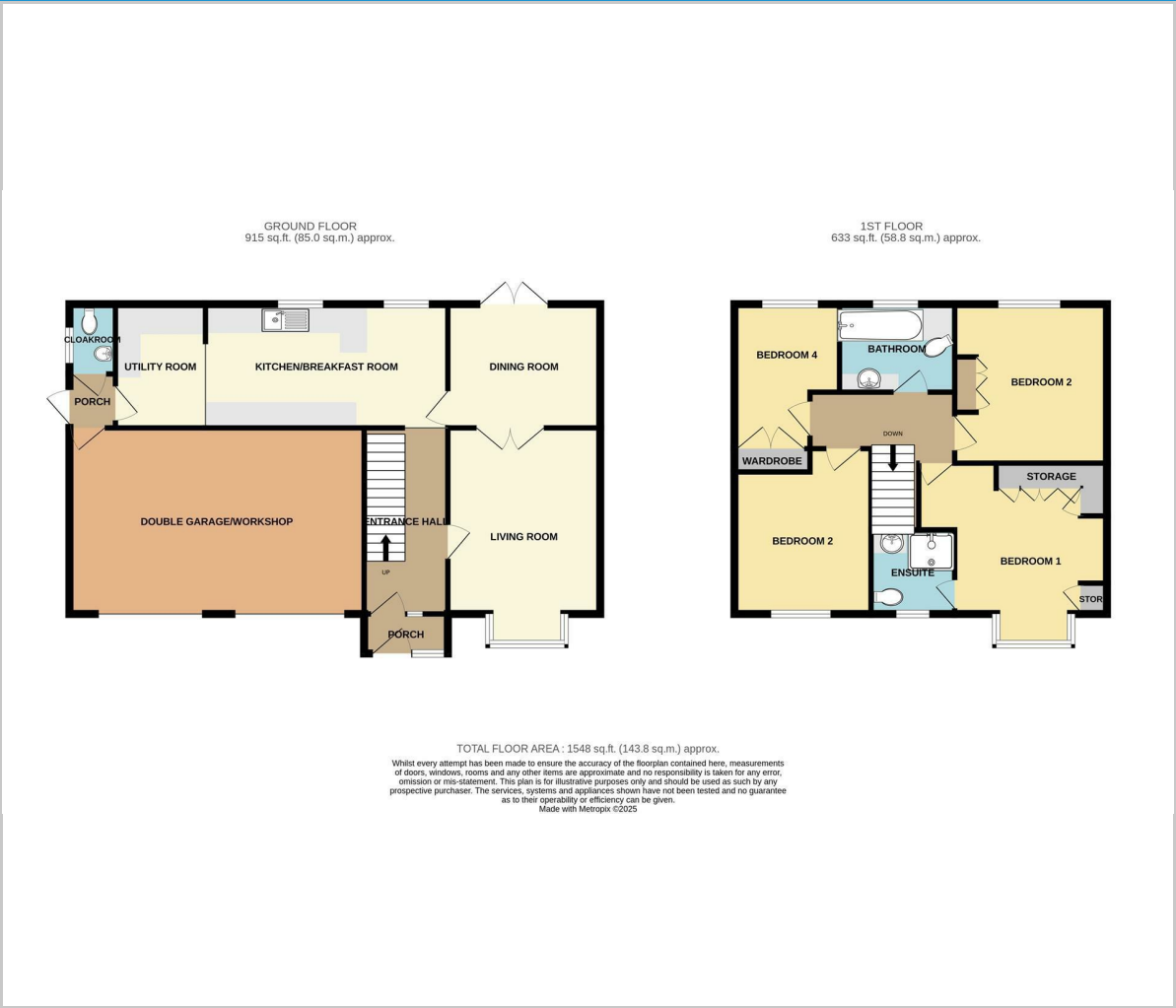
Plymouth, Britain's Ocean City, is one of Europe's most vibrant waterfront cities, with so much to explore. There's something for every traveller to experience in this historic city, however long you have to stay around. Located in one of the most beautiful locations imaginable, Plymouth is sandwiched between the incredible South West coastline and the wild beauty of Dartmoor National Park.

#### Directions

From Tavistock, take the A386 towards Plymouth. Pass through Roborough and the large Tesco on the left. Continue along this road and turn left after the Park and Ride onto Morgan Road. At the roundabout take the first exit onto Plymbridge Road. Follow this road for a short distance and turn right into Buena Vista Drive, then turn left into Frensham Avenue. Take the next left, into Frensham Gardens where the property can be found on the right.



Floor Plan



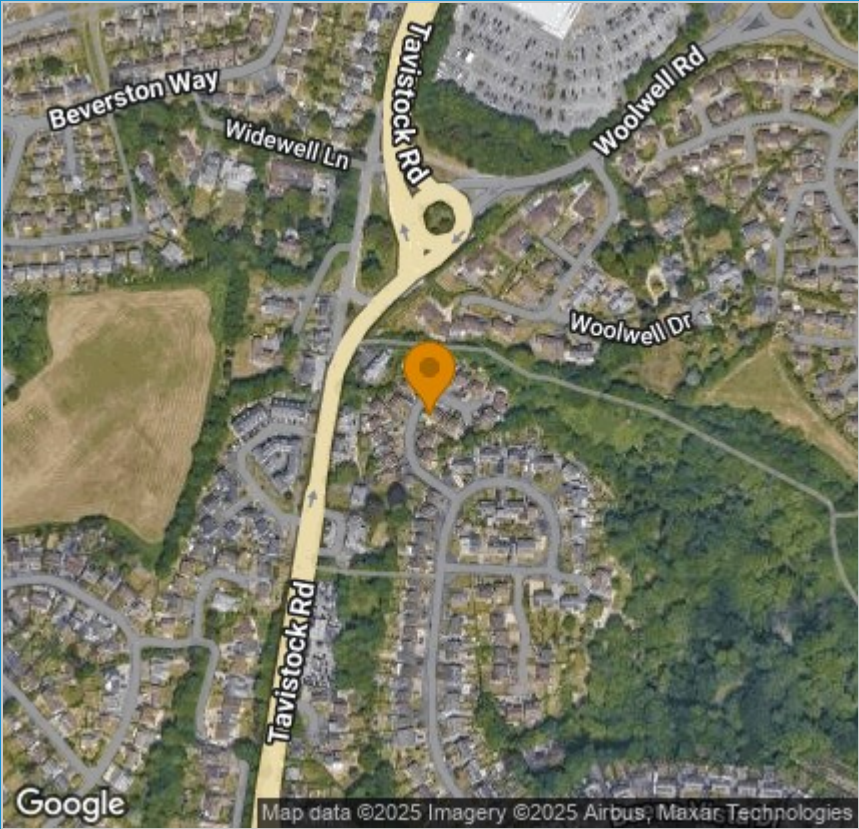
Viewing

Please contact our View Property Tavistock Office on 01822 614614 if you wish to arrange a viewing appointment for this property or require further information.

These particulars, whilst believed to be accurate are set out as a general outline only for guidance and do not constitute any part of an offer or contract. Intending purchasers should not rely on them as statements of representation of fact, but must satisfy themselves by inspection or otherwise as to their accuracy. No person in this firms employment has the authority to make or give any representation or warranty in respect of the property.

Unit 1, The Old Dairy Paddons Row, Tavistock, Devon, PL19 0HF  
Tel: 01822 614614 Email: Tavy@viewproperty.org.uk www.viewproperty.org.uk

Area Map



Energy Efficiency Graph

