



Town • Country • Coast



Alma Terrace

Gunnislake

Price Guide £140,000



Alma Terrace

Gunnislake

Nestled in the heart of the stunning Tamar Valley is this well presented, one bedroom cottage which boasts fantastic views of the surrounding woodland and is bursting with character and charm. A wonderful conservatory offers a great space for soaking in the sun or enjoying those countryside views. A large open plan living space invites you into the main living area. A feature fireplace creates a real focal point in the room and offers an incredible ambiance during those cold winter nights. The kitchen area offers ample worktop space as well as a range of base level units and plenty of storage. There is also useful understairs storage.

On the first floor is an incredible master suite. Benefitting from fantastic vaulted ceilings and stunning views of the nearby Tamar Valley. The bedroom has alcoves perfect for wardrobes or storage. A small desk area can also be found in the bedroom offering a great space for working from home. The bathroom is found off the master bedroom with a matching three piece suite as well as stunning views.

This property has the charming characteristics of a Cornish cottage with a small outside courtyard found at the end of the conservatory. This is a great space for a small outdoor storage area or perfect for a bistro dining set.





Living / Kitchen Area Overall

16'0" x 12'0" (4.88 x 3.68)

Living Room Area

12'1" x 11'5" (3.70 x 3.49)

Kitchen Area

8'9" x 5'10" (2.68 x 1.80)

Conservatory

11'2" x 6'0" (3.42 x 1.83)

Bedroom One

12'2" x 9'1" (expanding to 16'0") (3.71 x 2.77
(expanding to 4.89))

Ensuite

6'5" x 5'5" (1.97 x 1.67)

Tenure

Freehold

Services

Mains electricity, gas, water (metered) and drainage. Multi fuel burner.

Council Tax Band

A

EPC

54/E

Situation

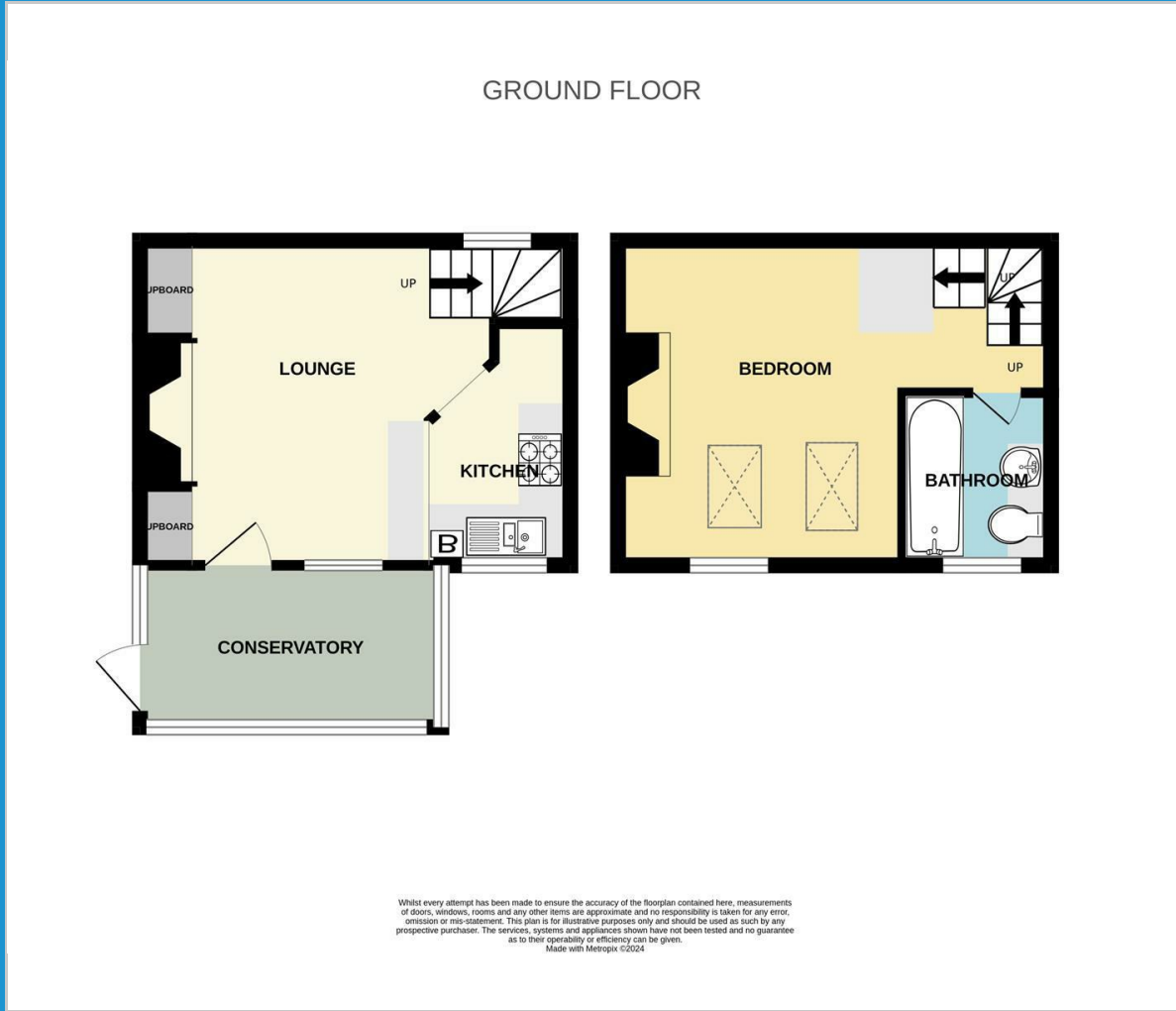
The village of Gunnislake features a selection of local shops, including a Post Office, General Store, Doctor's Surgery, and public houses. There is a train station approximately a mile from the hamlet with links into the City of Plymouth and the Tamar Valley is well known for its wonderful scenery and community. The nearest town is Tavistock which features a thriving town centre, supermarkets, schooling and is the gateway to Dartmoor National Park.

Directions

From Tavistock, take the A390 to Gunnislake. Upon reaching the village, continue through the traffic lights, and Alma Terrace can be found on the left hand side just after the church. The entrance to the property can be found round the back.



Floor Plan



Viewing

Please contact our View Property Tavistock Office on 01822 614614 if you wish to arrange a viewing appointment for this property or require further information.

These particulars, whilst believed to be accurate are set out as a general outline only for guidance and do not constitute any part of an offer or contract. Intending purchasers should not rely on them as statements of representation of fact, but must satisfy themselves by inspection or otherwise as to their accuracy. No person in this firm's employment has the authority to make or give any representation or warranty in respect of the property.

Unit 1, The Old Dairy Paddons Row, Tavistock, Devon, PL19 0HF
Tel: 01822 614614 Email: Tavy@viewproperty.org.uk www.viewproperty.org.uk

Area Map



Energy Efficiency Graph

