



1 Nursery Gardens | Chichester | PO19 8EX

£2,000 Per Month

Available Now



hancock

Lettings & Estate Agents

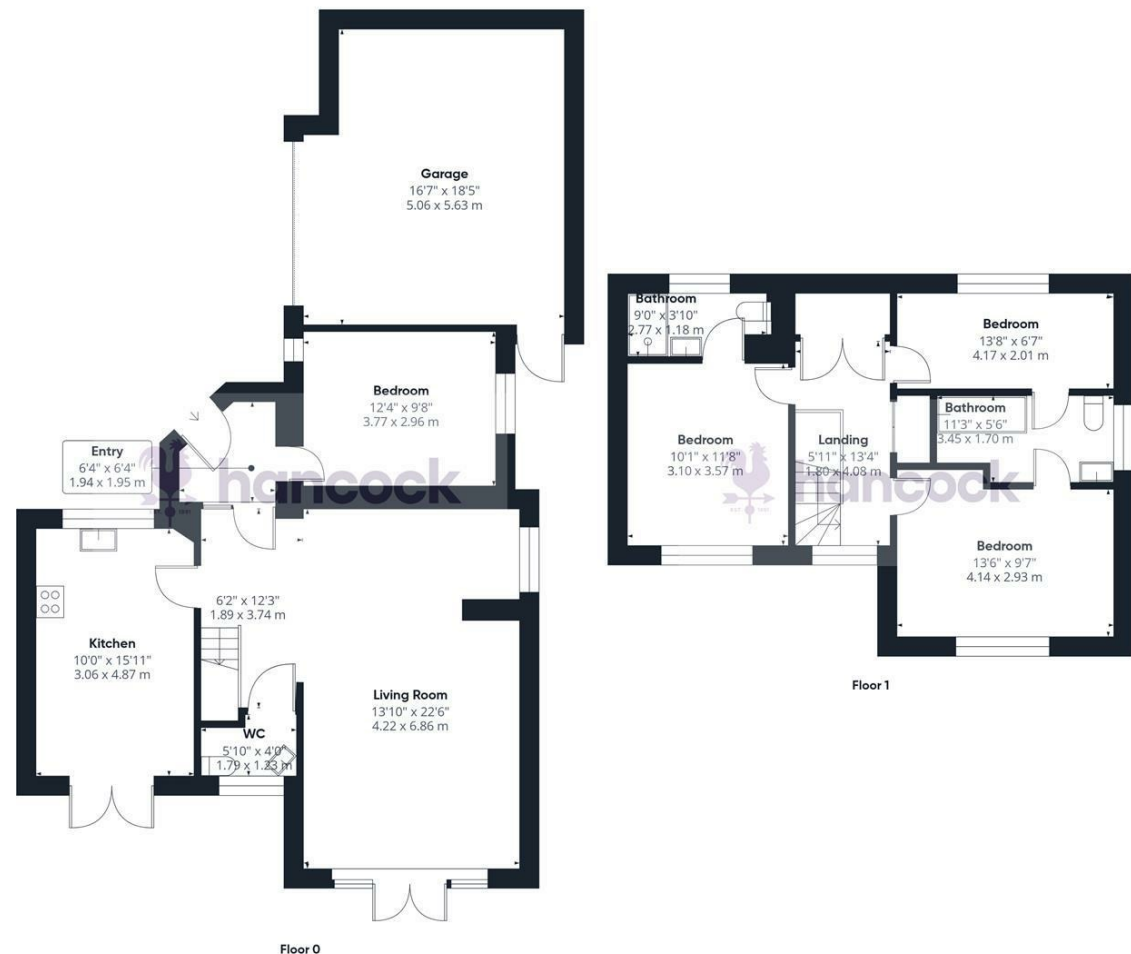
Nursery Gardens | Chichester | PO19
8EX
£2,000 Per Month

Approximate total area⁽¹⁾
1564 ft²
145.1 m²

(1) Excluding balconies and terraces

Calculations reference the RICS IPMS 3C standard. Measurements are approximate and not to scale. This floor plan is intended for illustration only.

GIRAFFE360



- Available Now
- EPC B
- Double Garage
- Rear Garden

- Three Double Bedrooms
- Council Band E
- Private Driveway Parking
- Modern Fitted Kitchen



