



9 BAYTREE CLOSE

CHICHESTER, PO19 5UF

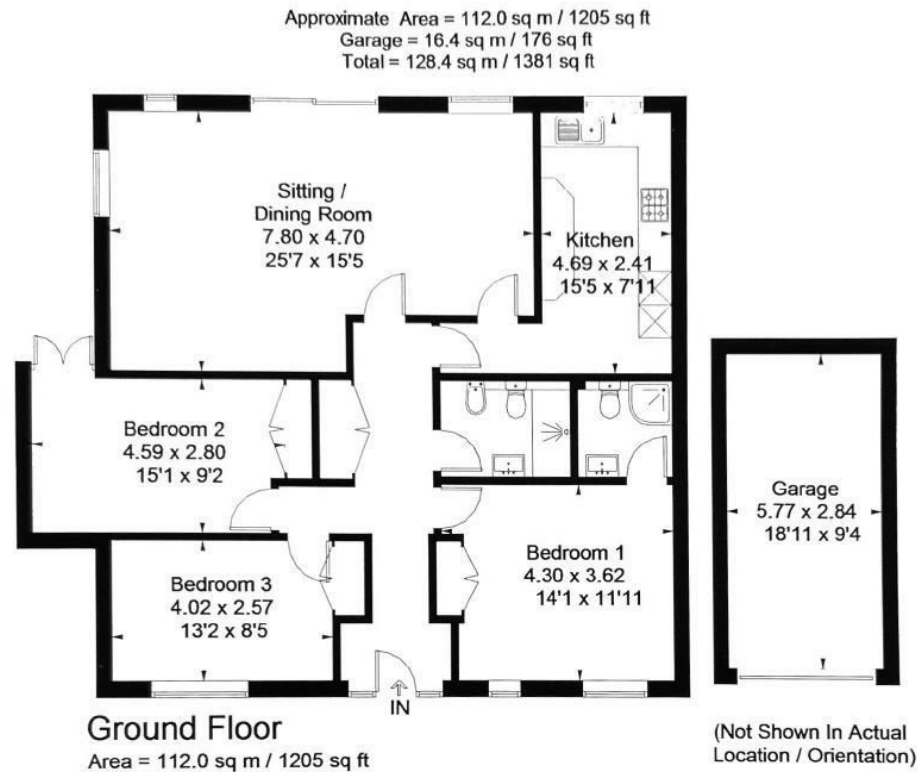
£595,000

LEASEHOLD - SHARE OF FREEHOLD

A spacious and updated 3-bedroom ground floor garden apartment with benefit of a garage and parking, located at the end of a popular development within the desirable Chichester suburb of Summersdale. No onward chain.



hancock
Lettings & Estate Agents



Energy Efficiency Rating		
	Current	Potential
Very energy efficient - lower running costs		
(92 plus) A		
(81-91) B		
(69-80) C	72	75
(55-68) D		
(39-54) E		
(21-38) F		
(1-20) G		
Not energy efficient - higher running costs		
England & Wales	EU Directive 2002/91/EC	

Agents Note: Whilst every care has been taken to prepare these particulars, they are for guidance purposes only. All measurements are approximate and are for general guidance purposes only and whilst every care has been taken to ensure their accuracy, they should not be relied upon and potential buyers/tenants are advised to recheck the measurements

Chichester Office Sales
 5 Northgate
 Chichester
 West Sussex
 PO19 1BA

01243 531155
 sales@hancockpartners.co.uk
 www.hancockpartners.co.uk



hancock
 Lettings & Estate Agents