



Spinneybank Willfield Lane, Stockton Brook, Staffordshire, ST9 9NR

Offers in the region of £700,000

'Simplicity is the key note of all time elegance.'- Coco Chanel

This one-of-a-kind property is the epitome of elegance. With contemporary interiors, an impressive manicured plot, and spacious accommodation ideal for entertaining, this impeccable home is perfect for professionals or mature families seeking space, style and serenity.

Roche House Farm, Thorncliffe Road, Leek, Staffordshire, ST13 7LW

01538 381 772 | 01782 901 088 | 07854643365 | denisewhite@denise-white.co.uk | www.denise-white.co.uk

Denise White Estate Agents Comments

Set within an idyllic semi-rural location, this exceptional detached home offers a rare opportunity to acquire a property that blends architectural excellence with refined contemporary living. A true showstopper, this one-of-a-kind residence features an impressive oak frame and glass extension that enhances its striking exterior and invites an abundance of natural light throughout.

Internally, the home has been designed with a focus on both style and comfort. Contemporary interiors are perfectly paired with thoughtful finishes to create a warm, bright, and welcoming ambiance across each space. The ground floor hosts a beautifully proportioned living room, bathed in natural light via expansive windows to the front, side, and rear. French doors open into the stunning oak sunroom – a breathtaking space with a vaulted ceiling and panoramic views of the surrounding woodland and fields. Ideal for year-round entertaining or relaxed evenings, this space truly forms the heart of the home.

The sleek and modern kitchen diner boasts a range of integrated appliances and offers direct access to the rear garden, seamlessly blending indoor and outdoor living. Also on the ground floor is a spacious double bedroom, along with a luxurious bathroom fitted with an exquisite Italian suite – perfect for guests, older children, or multigenerational living.

Upstairs, the principal suite is a private retreat, complete with a Juliet balcony, built-in wardrobes, and a personal balcony overlooking the rear garden. A stylish shower room with a rear-facing balcony window and an additional versatile double bedroom – ideal as a third bedroom or dressing room – complete the upper floor.

Externally, the home occupies a generous plot featuring a gated, paved driveway and detached garage. A raised deck wraps elegantly around the oak sunroom, with steps leading down to a secondary decked area – perfect for outdoor

dining or relaxation. Elevated lawns are bordered by charming dry stone walls and a gravel path that leads to the upper garden. A fully insulated and powered garden office offers a versatile space for home working, a gym, or a summer house, complemented by patio doors that open onto a seating area.

Additionally, there is a separate woodland area beyond, perfect for children to play and explore.

Perfectly suited for professionals, mature families, or anyone seeking a home built for entertaining, this remarkable property must be seen to be fully appreciated. With beautiful surroundings, high-end interiors, and flexible living spaces, this is countryside living at its finest.

Location

The property's location is in a most desirable, well established residential area, within easy travelling distance to country pubs and walks creating great opportunities for recreational activities. There is easy access to local amenities, public transport and the major road network links of the A50, A500 and M6. Also located within the catchment area of the most popular Endon schools.

Entrance Hallway



Wooden flooring. Double glazed window. Access into living room. Access into kitchen. Stairs leading to first floor accommodation. Wall lights. Wall mounted radiator.

Living Room

24'1" x 12'9" max (7.35 x 3.89 max)



Wooden flooring. Wall mounted radiators. UPVC double glazed windows to the front and rear aspect. Access into conservatory. Gas fire. Ceiling lights.

Sun Room

20'6" x 12'7" (6.25 x 3.86)



English Green oak frame structure with double glazed windows. Stone tile flooring. Wall mounted radiator. Double doors to the side and rear aspect leading to decking. Four electrically operated skylight windows. Wall lights. Access into living room.

Kitchen Diner

24'0" x 16'4" max (7.34 x 4.98 max)



Tiled flooring. Wall mounted radiator. UPVC double glazed windows to the front and rear aspect. Range of gloss wall and base units. Two integrated Neff ovens, one with integrated microwave and grill, second is slide and hide oven grill. Drainer style Franke sink unit. Integrated Neff dishwasher. Neff gas hob. Access to outside. Inset spotlights. Integrated Hotpoint fridge. Faber extractor fan.

Bedroom Two

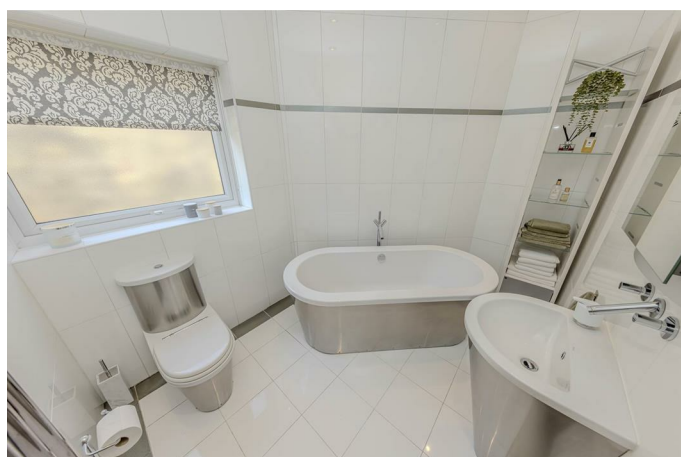
9'8" x 12'9" (2.95 x 3.91)



Wooden style flooring. Wall mounted radiator. UPVC double glazed windows to the front and side aspect. Ceiling light.

Bathroom

9'6" x 6'11" max (2.91 x 2.13 max)



Tiled flooring. Wall mounted radiator. WC. Free standing bath. Wash handbasin. Obscured UPVC double glazed window. Inset spotlights.

Utility Cupboard

Tiled flooring. Plumbing for washing machine. Boiler. Ceiling light.

Principal Bedroom

25'7" x 10'8" max (7.81 x 3.27 max)



Fitted carpet. Storage into eaves. Double doors looking over conservatory. Fitted wardrobes. Sliding doors leading onto balcony. Loft access.

Shower Room

5'5" x 13'3" max (1.67 x 4.05 max)



Tiled flooring. Heated towel rail. WC. Vanity style wash handbasin. Velux balcony window. Shower cubicle with shower attachment. Inset spotlights.

Bedroom Three / Dressing Room

10'8" x 15'9" max (3.26 x 4.82 max)



Fitted carpet. Wall mounted radiator. UPVC double glazed window to the side aspect. Storage into eaves. Fitted wardrobes. Inset spotlights.

Outside



Externally, there is a private driveway accessed by electronic gates with a detached garage. A raised decking area can be accessed from the Oak Sun room with stairs leading down to a lower decking level which leads onto a slated garden area with detached breeze house with electric and heating sitting up to eight people. Underneath the decking area is a useful garden storage room.

Garage

18'11" x 9'7" max (5.78 x 2.93 max)



Office

15'6" x 10'0" max (4.73 x 3.06 max)



Wooden style flooring. Double glazed window to the side aspect. Sliding doors. Inset spotlights.

Agents Notes

Tenure: Freehold

Services: All mains services connected

Council Tax: Staffordshire Moorlands Band E

Property has operational security system

Please Note

Please note that all areas, measurements and distances given in these particulars are approximate and rounded. The text, photographs and floor plans are for general guidance only. Denise White Estate Agents has not tested any services, appliances or specific fittings – prospective purchasers are advised to inspect the property themselves. All fixtures, fittings and furniture not specifically itemised within these particulars are deemed removable by the vendor.

About Your Agent



"In a world where you can be anything, be kind"

Denise is the director of Denise White Estate agents and has worked in the local area since 1999. Denise and the team can help and advise with any information on the local property market and the local area.

Denise White Estate Agents deal with all aspects of property including residential sales and lettings.

Please do get in touch with us if you need any help or advise.

Property To Sell Or Rent?

We can arrange an appointment that is convenient with yourself, we'll view your property and give you an informed FREE market appraisal and arrange the next steps for you.

You Need A Solicitor!

A good conveyancing solicitor can make or break your moving experience – we're happy to recommend or get a quote for you, so that when the times comes, you're ready to go.

Do You Require A Mortgage?

Speak to us, we'd be more than happy to point you in the direction of a reputable adviser who works closely with ourselves.

WE WON!



Local Estate Agent Wins Prestigious British Gold Award for Customer Service

Denise White Bespoke Estate Agents has been honored with the esteemed Gold Award 2024 from the British Property Awards for their exceptional customer service and extensive local marketing knowledge in Leek and its surrounding areas.

The British Property Awards, renowned for their

inclusivity and comprehensive evaluation process, assess estate agents across the United Kingdom based on their customer service levels and understanding of the local market. Denise White Estate Agents demonstrated outstanding performance throughout the rigorous and independent judging period.

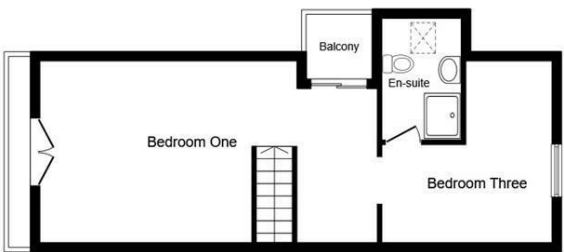
As part of the assessment, the British Property Awards mystery shopped 90% of estate agents nationwide, evaluating their telephone etiquette, responsiveness to emails, promptness in returning missed calls, and, crucially, their expertise in the local marketing area.

The Gold Award is a testament to the estate agents who consistently go above and beyond, delivering exceptional levels of customer service, focusing on their commitment and excellence within the local community.

Floor Plan



Ground Floor
Floor area 91.7 sq.m. (987 sq.ft.)



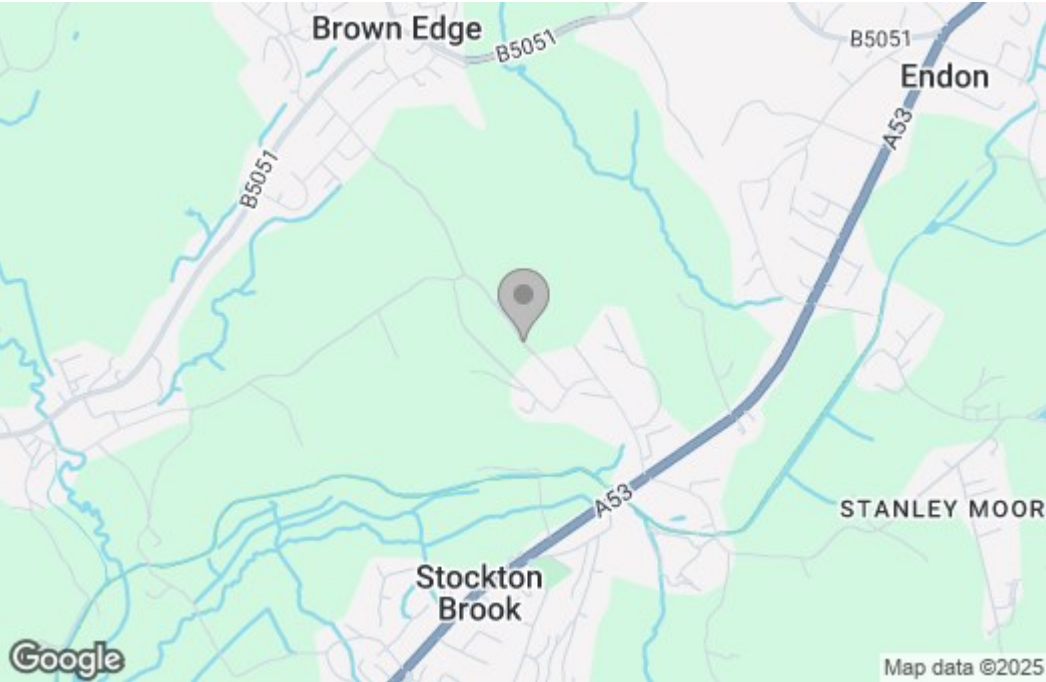
First Floor
Floor area 46.2 sq.m. (497 sq.ft.)

Total floor area: 137.9 sq.m. (1,484 sq.ft.)

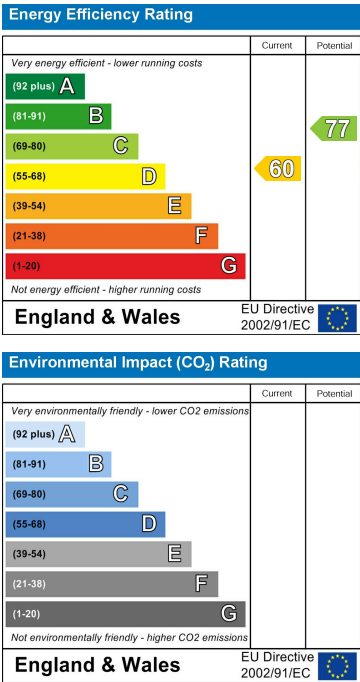
This floor plan is for illustrative purposes only. It is not drawn to scale. Any measurements, floor areas (including any total floor area), openings and orientations are approximate. No details are guaranteed, they cannot be relied upon for any purpose and do not form any part of any agreement. No liability is taken for any error, omission or misstatement. A party must rely upon its own inspection(s). Powered by www.Propertybox.io



Area Map



Energy Efficiency Graph



These particulars, whilst believed to be accurate are set out as a general outline only for guidance and do not constitute any part of an offer or contract. Intending purchasers should not rely on them as statements of representation of fact, but must satisfy themselves by inspection or otherwise as to their accuracy. No person in this firms employment has the authority to make or give any representation or warranty in respect of the property.