



47 Evenlode Drive

, Didcot, OX11 7XQ

Guide price £285,000



A well presented 2 bedroom cottage situated in popular cul de sac location within a short walk to Didcot Town centre and station.



Description

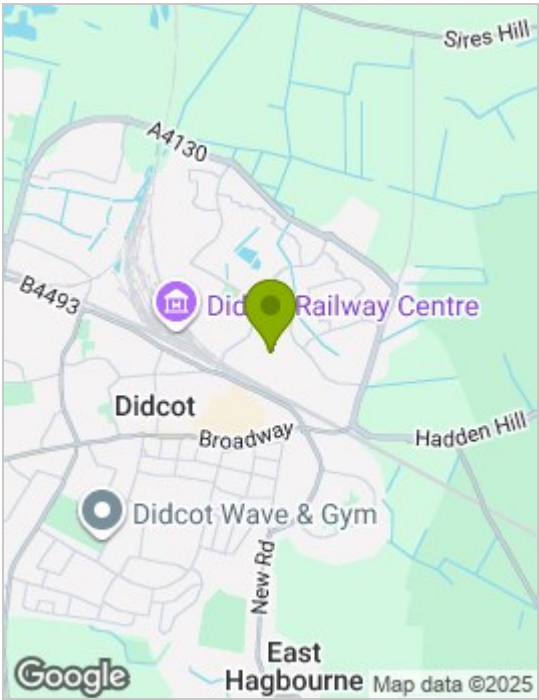
A well presented 2 bedroom cottage situated in popular cul de sac location within a short walk to Didcot Town centre and station.

Pathway and front garden leads to the front door, opening in to the reception hall leading to:
Good sized kitchen with gas hob, electric oven, ample worktop space, view to front garden.
To the rear of the property is the spacious living / dining room with understairs storage and sliding patio door to the conservatory.
Upstairs leads to the landing with airing cupboard
Double bedroom to the rear with storage
Second bedroom to the rear
Bathroom with shower over bath, WC and basin

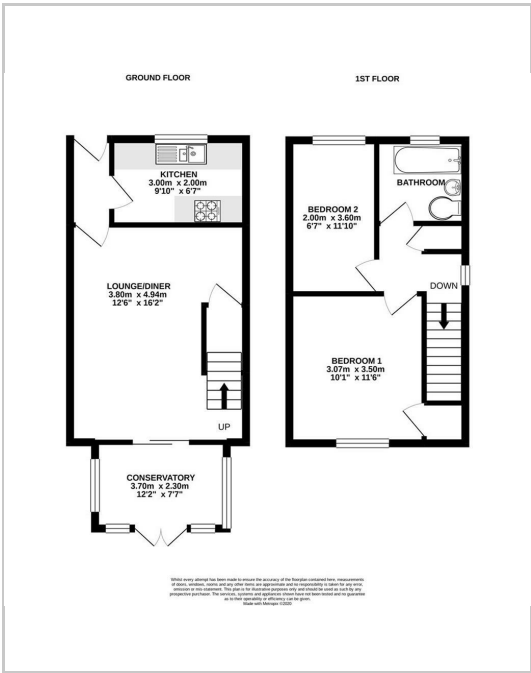
Outside to
Good sized rear garden with shed and side access
Parking for 2 cars in tandem

Located within very easy walking distance of Didcot Town centre, with it's popular Orchard centre with shops, cafés, bars, and restaurants, as well as Sainsburys.
Didcot offers easy access to the M4, M40, and A34, with Harwell Campus and mainline Didcot Parkway train station nearby.

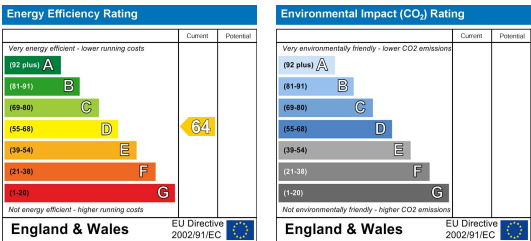
Area Map



Floor Plans



Energy Efficiency Graph



These particulars, whilst believed to be accurate are set out as a general outline only for guidance and do not constitute any part of an offer or contract. Intending purchasers should not rely on them as statements of representation of fact, but must satisfy themselves by inspection or otherwise as to their accuracy. No person in this firms employment has the authority to make or give any representation or warranty in respect of the property.