



33 Atwell Close

, Wallingford, OX10 0LJ

Guide price £175,000



A well presented ground floor maisonette situated in a popular cul de sac location with 2 parking spaces.



Description

A well presented ground floor maisonette situated in a popular cul de sac location with 2 parking spaces.

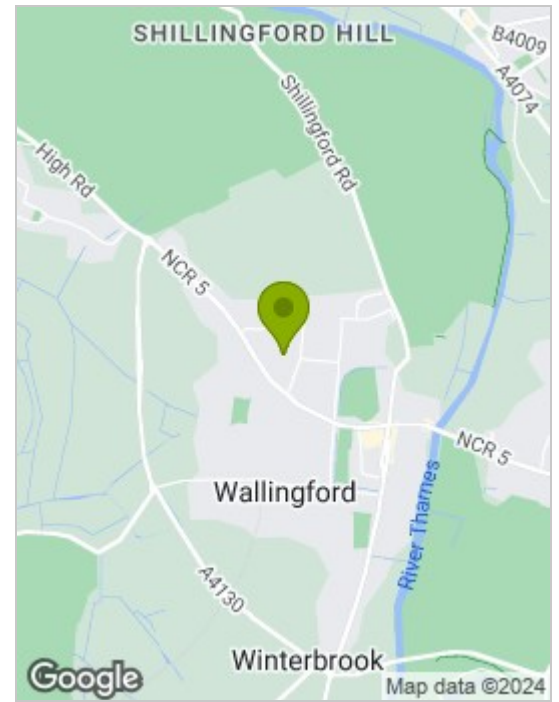
Entry in to the good sized kitchen with plenty of storage, off the kitchen is the good sized living / dining room with French doors overlooking the garden.

Double bedroom with built in wardrobes
Bathroom is spacious and has a shower over bath, WC, basin and airing cupboard

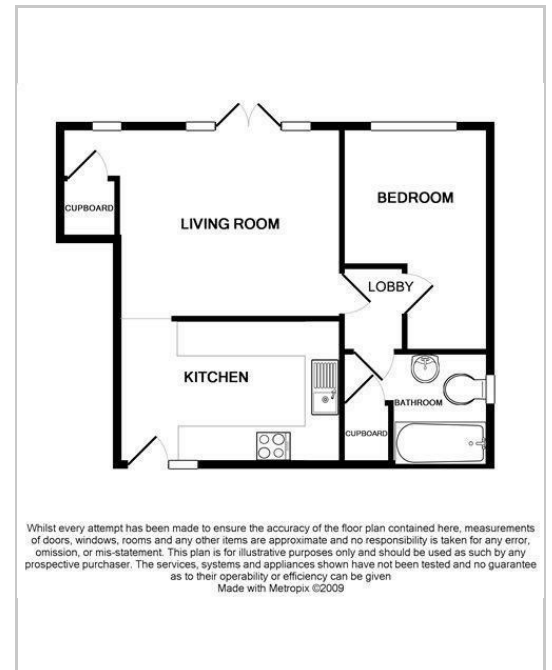
Outside to
Communal garden which is gated to the rear of the property
2 parking spaces

This light and spacious property offers a very good amount of space at excellent value with the benefit of being 0.7 miles to Town Centre, with its popular market place and local shops, cafés, bars and restaurants along with Waitrose and nearby Lidl.
Wallingford is located within easy access to the M4, M40 and A34, Harwell campus and mainline stations can be found at nearby Cholsey and Didcot

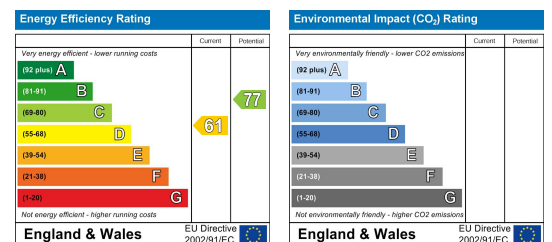
Area Map



Floor Plans



Energy Efficiency Graph



These particulars, whilst believed to be accurate are set out as a general outline only for guidance and do not constitute any part of an offer or contract. Intending purchasers should not rely on them as statements of representation of fact, but must satisfy themselves by inspection or otherwise as to their accuracy. No person in this firm's employment has the authority to make or give any representation or warranty in respect of the property.