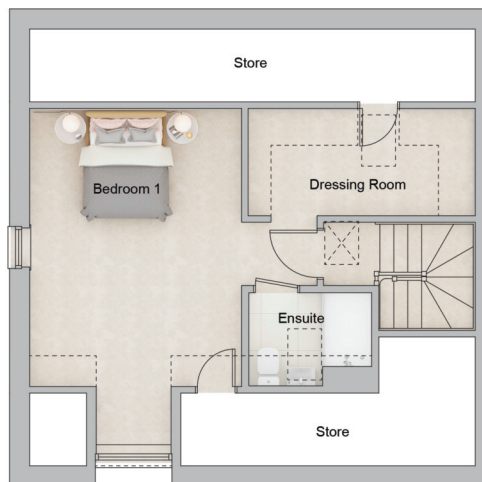




Kitchen/living/dining 3.15/3.90m x 7.04m
10'3"/12'8" x 24'0"

Bedroom 1 3.38m x 4.45m
11'1" x 14'6"

Bedroom 2 2.89m x 3.10m
9'5" x 10'2"



The Wychwood 2 Bed Bungalow

Plot 121
Plot 120 (opp hand)

Why choose the Wychwood?

The hallway of this perfectly formed home opens into a spacious open-plan kitchen, dining and living room, with French doors accessing the garden. A large downstairs bathroom, double bedroom and practical storage cupboards.

Upstairs, an impressive and spacious master bedroom, with a modern en suite, a walk-in dressing room and two large storage cupboards in the eaves.

- Two double bedrooms, one downstairs and one upstairs
- The upstairs master with en suite and a walk-in dressing room
- Open-plan kitchen, dining and living room
- French doors leading into the garden
- Large shared family bathroom on ground floor
- Minimum of two parking spaces.