



## Foxfields, Stoke-on-Trent

£1,450 Per Month

Explore Foxfields, a community of new 2, 3 & 4 bedroom homes on the outskirts of Stoke-on-Trent where there is something for everyone.

This modern three-storey home is ideal for family life.

Experience the height of modern living with The Leicester: a three-storey, four-bedroom home thoughtfully designed for families.

The ground floor features an open-plan kitchen/dining room, a bright living room with French doors seamlessly connecting to the garden, as well as a convenient under-stairs storage cupboard and WC.

Up to the first floor, you'll find three generously sized bedrooms and the main family bathroom.

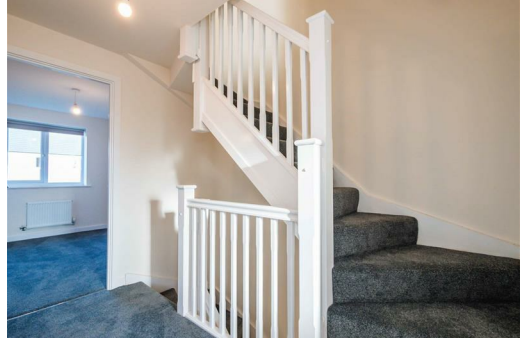
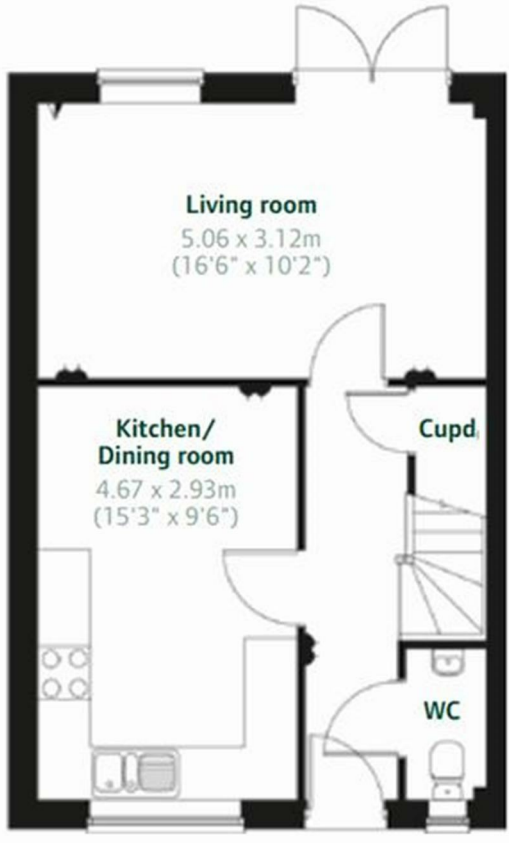
The top floor boasts an impressive master bedroom complete with en-suite, ensuring a comfortable and stylish place to call it a night.

Benefitting from excellent regional access, Stoke-on-Trent train station easily links you to Liverpool, Manchester & Birmingham.

You'll have plenty of supermarkets, retail stores, pubs, restaurants, cafes, parks & leisure activities at your fingertips whilst living at this development.

For family moments, the picturesque Peak District National Park is within reach, whilst the thrill of Alton Towers is less than 10 miles away.





Energy Efficiency Rating		Environmental Impact (CO <sub>2</sub> ) Rating	
Current	Potential	Current	Potential
95	95	A	A
94	94	B	B
93	93	C	C
92	92	D	D
91	91	E	E
90	90	F	F
89	89	G	G