



Skybridge Close, Coventry

£1,075 PCM

Discover the epitome of urban living at Paragon Park, located less than 1.5 miles northeast of Coventry city centre.

With a rich history tied to the former Courtaulds factory, this development seamlessly integrates the factory's impressive façade with modern finishings, preserving it as a local landmark.

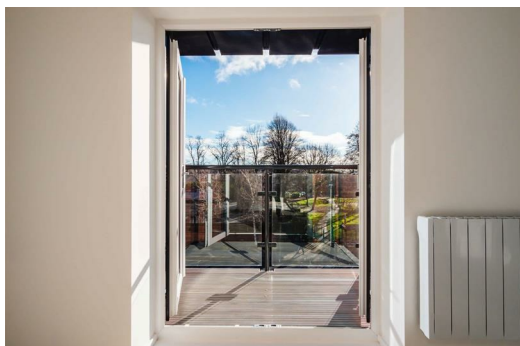
As well as having great local amenities and plenty of green spaces, Coventry's central location means that you'll be well-placed for reaching Birmingham, Northampton, Leicester and Royal Leamington Spa. It'll be easy for family and friends to come and visit you in your new home.

Welcome to this charming two-bedroom apartment featuring an open-plan kitchen, living and dining area, creating a seamless and inviting space to call home.

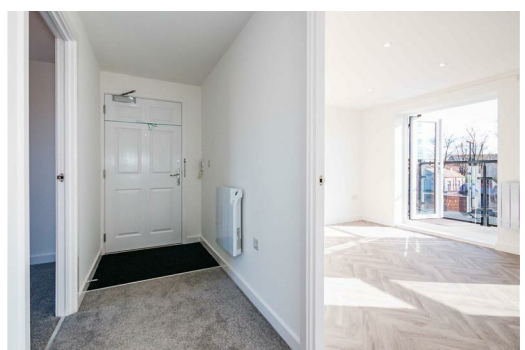
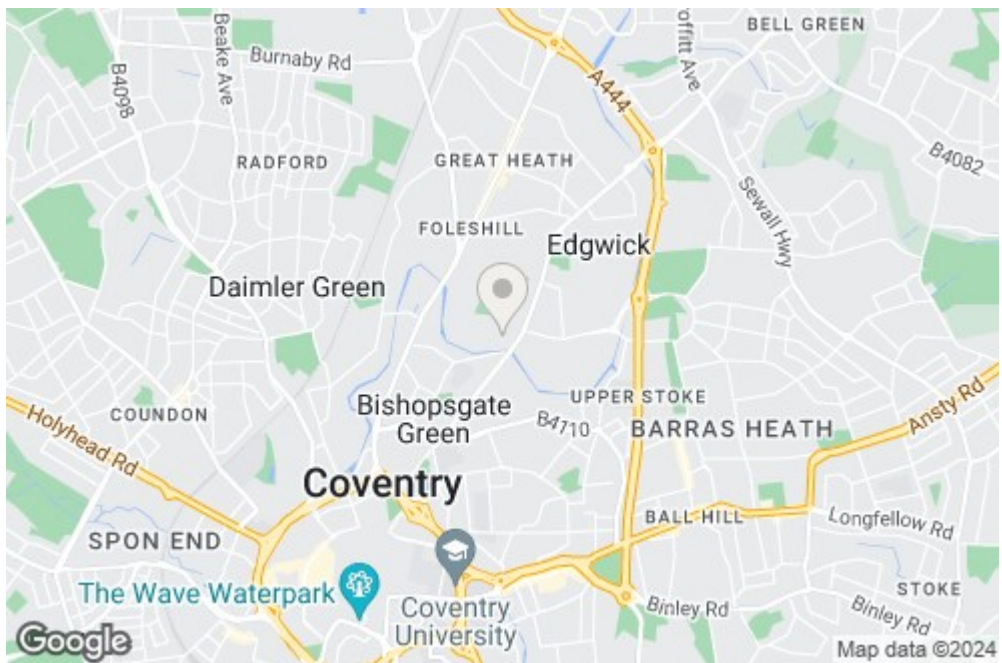
Both bedrooms are generously sized and there's a sleek separate bathroom. A practical storage cupboard helps to keep your spaces decluttered, and the added bonus of an allocated parking space enhances your living experience.

This apartment is tailored for the modern lifestyle, catering to the needs of young professionals, families and downsizers alike.

Deposit: £1240
Tenancy Length: 12 Months
Council Tax Band: TBC
Available Now



45 Skybridge Close, Coventry, CV6 5SD



Energy Efficiency Rating		Environmental Impact (CO ₂) Rating	
Current	Potential	Current	Potential
89	89	B	B
85-88	85-88	C	C
81-84	81-84	D	D
77-80	77-80	E	E
73-76	73-76	F	F
69-72	69-72	G	G