



Ridgeway, Nottingham, NG5

£1,235 PCM

Location, Travel & Local Community

Positioned in the heart of historic Bestwood—c.5 mile north of Nottingham City Centre—we proudly offer an attractive collection of stylish two to four bedroom modern family homes that benefit from close proximity to an abundance of supermarkets, various green open spaces including the 650-acre Bestwood Country Park, an abundance of high graded primary schools surrounding the site and Nottingham City Hospital just 1.3 miles to the south.

Great accessibility to the national motorway system (M1 J26 c.3 miles west). Nottingham mainline station, 4 miles to the south, offers regular inter-city train services on the Midland mainline to London, Leeds, Sheffield, Leicester, and Derby amongst other destinations.

Education & Schools Nearby

The area provides excellent opportunities for children aged 4-18, with a range of schools ranging from Nurseries, Primary schools and Nottingham Trent university all within 3.3 miles of the site. Making the school run quick and easy.

ABOUT YOUR HOME - THE ARUN

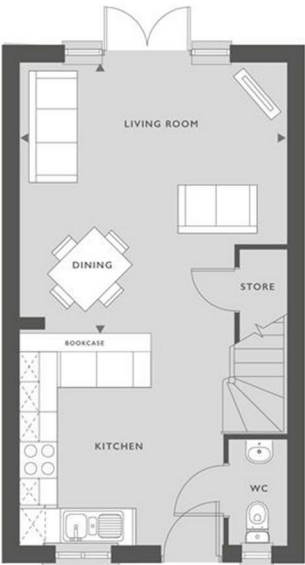
The Arun has been thoughtfully designed for modern family living, combining style and practicality throughout. The open-plan kitchen, complete with a sleek breakfast bar, forms the heart of the home – an ideal spot for quick meals or family catch-ups. Light floods into the dining and living area through French doors, creating a bright and inviting space that opens onto the rear garden. The ground floor also features a convenient WC and a storage cupboard, ensuring everyday life runs effortlessly.





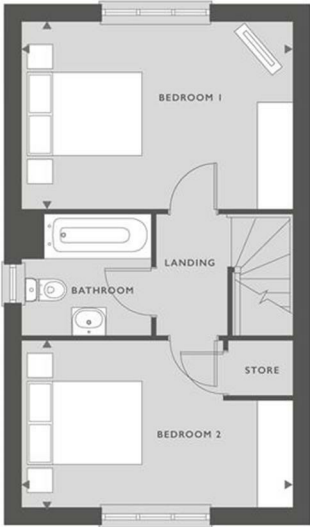
8 Mattersey Terrace, Nottingham, NG5 9FB

759 SQFT  
70 M²



GROUND FLOOR

KITCHEN	3.35M X 3.50M	11' X 11'6"
LIVING/DINING ROOM	4.37M X 4.48M	14'5" X 14'9"



FIRST FLOOR

BEDROOM 1	4.37M X 3.07M	14'5" X 10'1"
BEDROOM 2	4.37M X 2.70M	14'5" X 8'11"

■ SVP

