



Collingham Crescent, Nottingham, NG5

£1,250 PCM

3-Bedroom Semi-detached house
 Stylish kitchen/dining room
 Impressive skylight windows and French doors leading to rear garden
 Spacious separate living room
 Three well-proportioned bedrooms
 Modern family bathroom with separate shower cubicle decorated with Porcelanosa tiles
 Downstairs WC

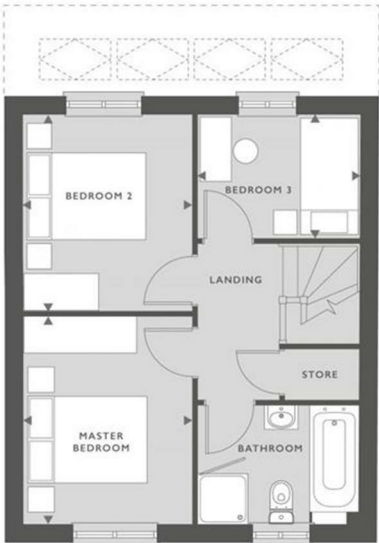
Positioned in the heart of historic Bestwood—c.5 mile north of Nottingham City Centre—we proudly offer an attractive collection of stylish two to four bedroom modern family homes that benefit from close proximity to an abundance of supermarkets, various green open spaces including the 650-acre Bestwood Country Park, an abundance of high graded primary schools surrounding the site and Nottingham City Hospital just 1.3 miles to the south.

Deposit: £1,440
 Tenancy Length: 12 Months
 Council Tax Band: TBA
 Available Now



13 Collingham Crescent, Nottingham, NG5 9DF

855 SQFT
79.4 MP



GROUND FLOOR

KITCHEN/DINING ROOM	5.34M X 3.29M	17'6" X 10'10"
LIVING ROOM	3.06M X 4.61M	10' X 15'2"

FIRST FLOOR

MASTER BEDROOM	2.71M X 3.33M	8'11" X 10'11"
BEDROOM 2	2.71M X 3.13M	8'11" X 10'4"
BEDROOM 3	2.56M X 1.97M	8'5" X 6'6"

Skylight windows
SVP

