



## Collingham Crescent, Nottingham, NG5

£1,125 PCM

- Fully open-plan kitchen/dining/living room with integrated appliances\*
- Light enhancing French doors
- Convenient downstairs w/c
- Two well-proportioned bedrooms
- Family bathroom inclusive of tiling
- Useful storage cupboard
- Turf, shrubbery and fencing to front and rear gardens where applicable
- Pet Friendly

Positioned in the heart of historic Bestwood—c.5 mile north of Nottingham City Centre—we proudly offer an attractive collection of stylish two to four bedroom modern family homes that benefit from close proximity to an abundance of supermarkets, various green open spaces including the 650-acre Bestwood Country Park, an abundance of high graded primary schools surrounding the site and Nottingham City Hospital just 1.3 miles to the south.

Deposit: £1,290  
Tenancy Length: 12 Months  
Council Tax Band: TBA  
Available Now



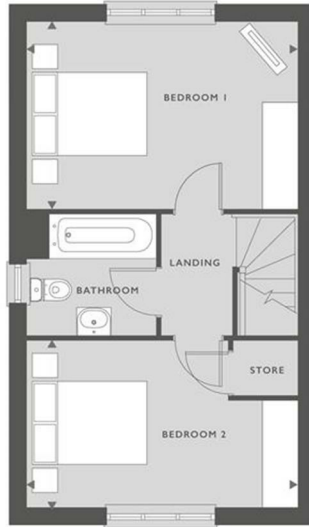


759 SQFT  
70 M<sup>2</sup>



**GROUND FLOOR**

KITCHEN	3.35M X 3.50M	11" X 11'6"
LIVING/DINING ROOM	4.37M X 4.48M	14'5" X 14'9"



**FIRST FLOOR**

BEDROOM 1	4.37M X 3.07M	14'5" X 10'1"
BEDROOM 2	4.37M X 2.70M	14'5" X 8'11"

■ SVP



Energy Efficiency Rating		Environmental Impact (CO <sub>2</sub> ) Rating	
Current	Potential	Current	Potential
83	96	G	B