



Swan Court, 206 Swan Lane, Coventry

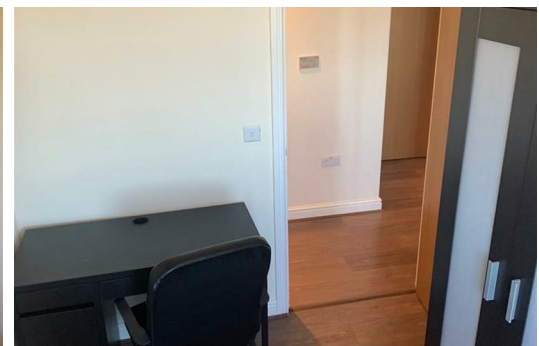
£850 PCM

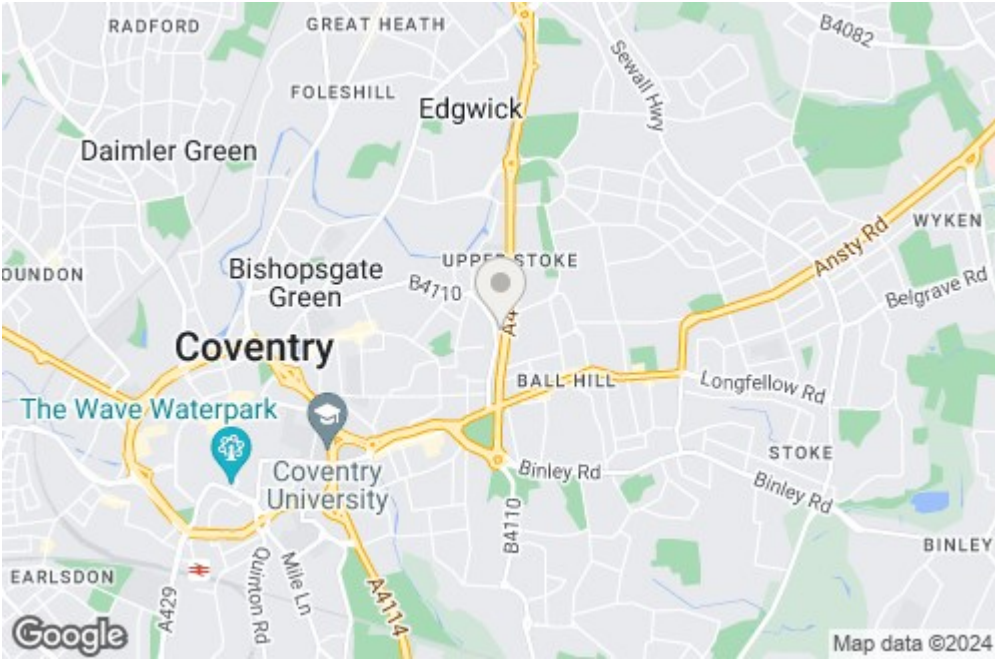
Ascend Properties are pleased to offer this well-presented, two bed, 1 bath furnished apartment in the heart of Coventry. Situated just over a mile from the city centre, you are within walking distance from places such as Coventry University, Coventry Transport Museum, Coventry Cathedral and many more.

Comprising of an open hallway, kitchen diner, spacious lounge, well sized master bedroom, a further double bedroom and modern bathroom.

For more information, you can call us on 01902 910 101.

Available 24th September. C TAX A. 12 month tenancy. Deposit £920.





Energy Efficiency Rating		Environmental Impact (CO <sub>2</sub> ) Rating	
Current	Potential	Current	Potential
<b>A1</b>	<b>B1</b>	<b>A1</b>	<b>A1</b>
<b>B</b>	<b>C</b>	<b>B</b>	<b>B</b>
<b>C</b>	<b>D</b>	<b>C</b>	<b>C</b>
<b>D</b>	<b>E</b>	<b>D</b>	<b>D</b>
<b>E</b>	<b>F</b>	<b>E</b>	<b>E</b>
<b>F</b>	<b>G</b>	<b>F</b>	<b>F</b>
<b>G</b>		<b>G</b>	<b>G</b>