



St Andrews Heights, Sutton-In-Ashfield, NG17

£1,175 Per Month

Discover the perfect blend of convenience and beauty at St Andrew's Heights, an exquisite new development featuring 2, 3, and 4-bedroom homes.

Nestled between the sought-after towns of Sutton-in-Ashfield and Mansfield, the location offers a tranquil setting surrounded by picturesque open fields.

Enjoy a range of amenities right on your doorstep or immerse yourself in the charm of the historic village of Skegby which is within walking distance.

With excellent transport links, including the nearby Sutton Parkway railway station, connecting you to Mansfield, Worksop, and Nottingham, St Andrew's Heights offers the ideal combination of accessibility and natural splendour.

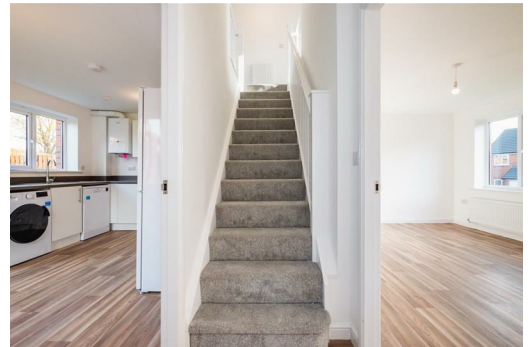
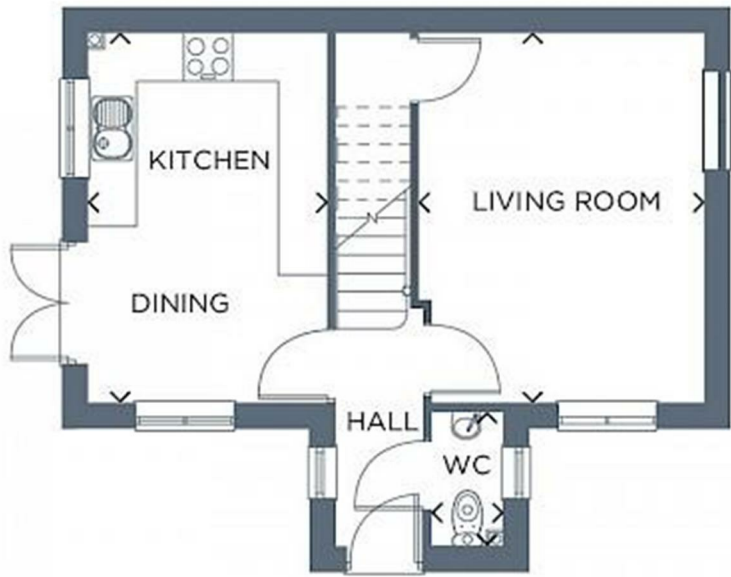
Welcome to The Renmore, a stunning three-bedroom detached home that embodies modern living.

Step into this exquisite property and be captivated by the elegant central staircase, dividing the space and setting the tone for what lies beyond. The contemporary kitchen-diner is the heart of the home, boasting a sleek design and effortless flow for entertaining. French doors lead to the garden, perfect for hosting dinner parties or enjoying family meals in the sun.

Adjacent to the kitchen-diner is the spacious living room, bathed in natural light through the large windows. The perfect place to relax and unwind with loved ones or indulge in a good book! The under-stairs storage cupboard also keeps living spaces organised and clutter-free.

Upstairs, three generously proportioned bedrooms maximise the comfort and tranquility of The Renmore. The family bathroom showcases luxurious fixtures, whilst the master bedroom, with its lavish en-suite bathroom, offers a private sanctuary





Energy Efficiency Rating		Environmental Impact (CO ₂) Rating	
Current	Potential	Current	Potential
 82	 95	 28	 25