



Coseley New Village, Tipton

£1,395 PCM

Discover the charm of Coseley New Village, a welcoming community nestled between Wolverhampton, Dudley, and Wednesbury. Positioned within the wider West Midlands metropolitan area, with easy access to Birmingham, this development offers a range of modern houses to rent, catering to growing families, young professionals, and downsizers alike.

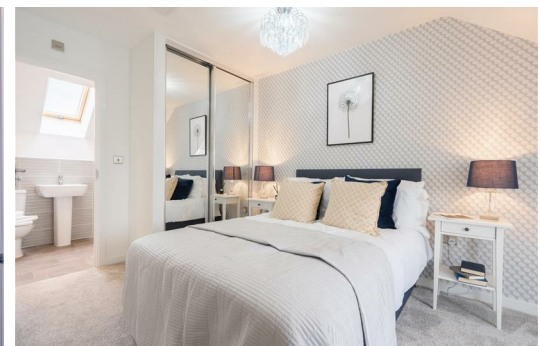
The local neighbourhood and close-by big city provide a diverse array of amenities, from convenient nearby supermarkets to a wide selection of high street stores within Birmingham City Centre, as well as dining options and a lively nightlife all within easy reach. Additionally, for those seeking a peaceful retreat, the scenic Shropshire countryside is just a short distance to the west. Embrace the perfect blend of urban and rural living in this delightful community.

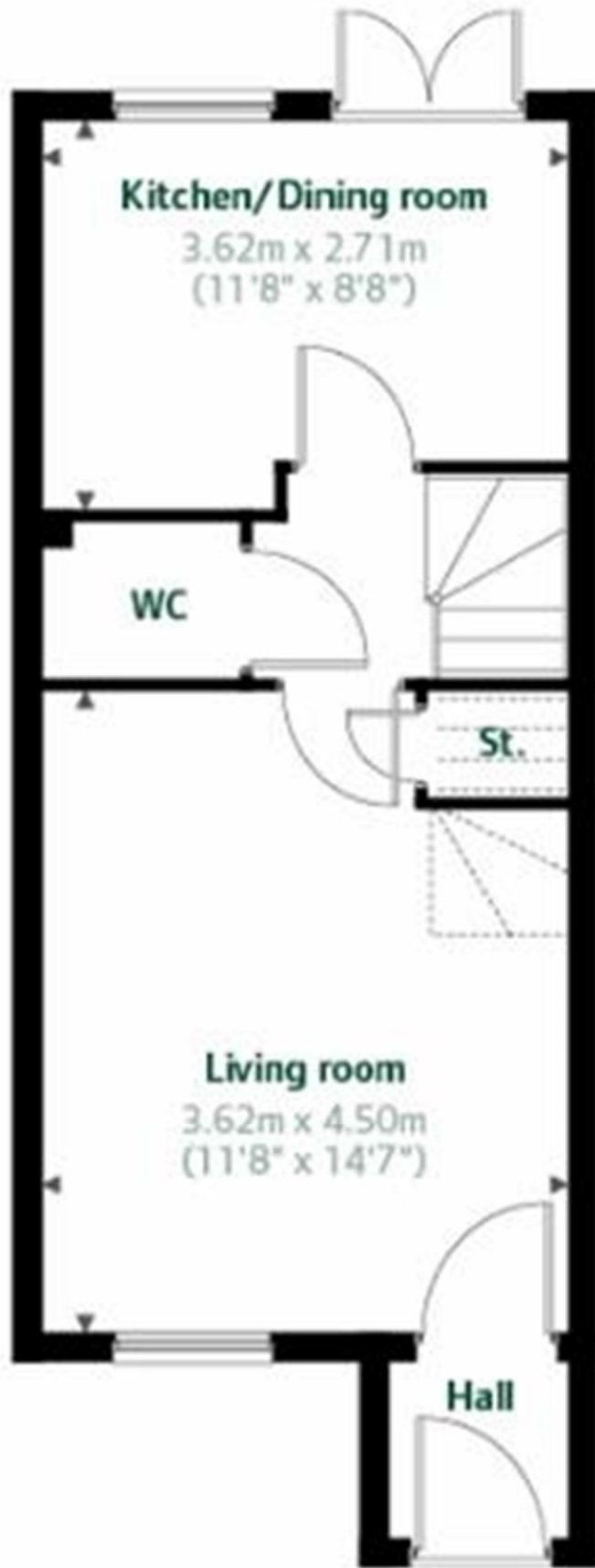
The Windermere is a flexible three bedroom home that adapts effortlessly to your lifestyle.

For growing families, the second floor offers a master bedroom with a private ensuite bathroom, ensuring comfort and space. Alternatively, for young professionals, you'll appreciate the option to have a guest bedroom and bathroom as well as a home office.

Embrace the functionality of this new home that caters to various needs, providing a space that truly works for you.

Deposit £1600
Unfurnished
Council Tax TBA
Available Now





Energy Efficiency Rating		Environmental Impact (CO ₂) Rating	
Current	Potential	Current	Potential
	84		