



Brookfields Place, Coventry

£1,425 PCM

Welcome to Whitmore Place, a development offering homes to rent in the sought-after residential neighbourhood of Holbrooks, just 2.5 miles north of Coventry city centre. Embrace picturesque green open spaces within walking distance, a variety of nearby schools, and an array of shops and facilities within a couple of miles.

Additionally, the proximity to Birmingham, Nuneaton, Rugby, and Royal Leamington Spa, coupled with an excellent road network including the M6, M40, and M42, ensures easy access to surrounding areas - making Whitmore Place an ideal choice to put down roots!

Experience the perfect blend of functionality and elegance in the Saunton.

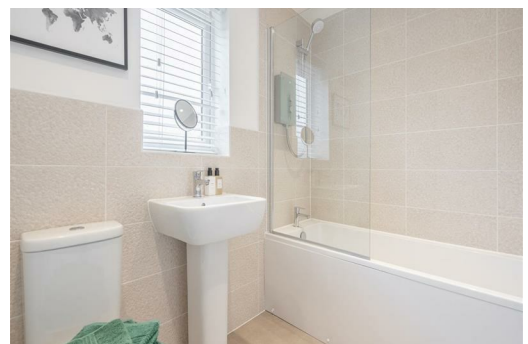
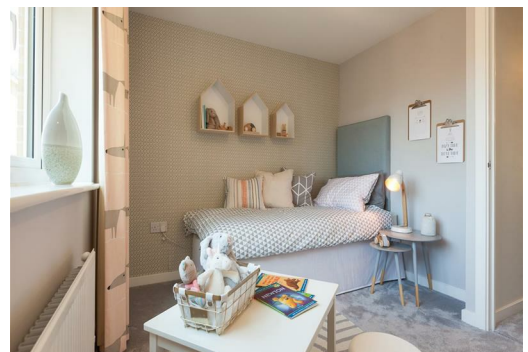
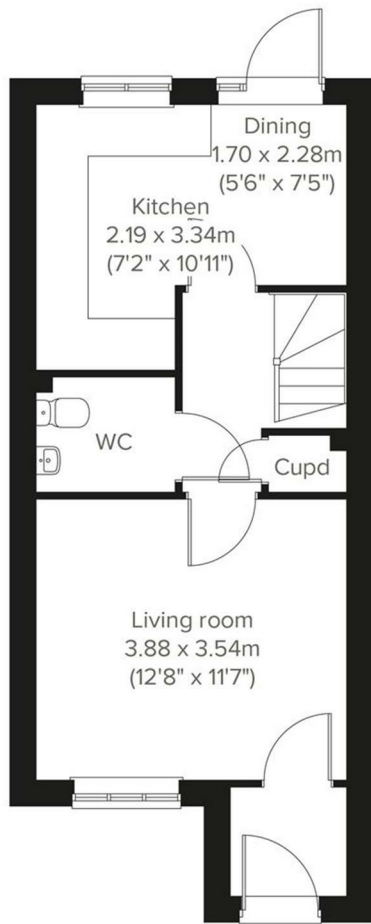
Step inside the appealing three-storey, three-bedroom home designed for modern living. This home features a contemporary open-plan kitchen/dining room, a well-proportioned living room, and three generously sized bedrooms. The master bedroom can be found on the top floor and boasts a spacious en suite for added luxury.

Additionally, the Saunton is the perfect blend of practicality meets style with the inclusion of an enclosed porch, a downstairs WC, three storage cupboards, and off-road parking.

This property is located close to building works and has been priced accordingly due to some disruption.

Deposit £1,640
Tenancy Length: 12 Months
Council Tax Band: TBC
Available Now





Energy Efficiency Rating		Environmental Impact (CO ₂) Rating	
Current	Potential	Current	Potential
95	95	A	A
84	95	B	A
74	95	C	A
64	95	D	A
54	95	E	A
44	95	F	A
34	95	G	A