



## Brookfields Place, Coventry

£1,725 PCM

Welcome to Whitmore Place, a development offering homes to rent in the sought-after residential neighbourhood of Holbrooks, just 2.5 miles north of Coventry city centre. Embrace picturesque green open spaces within walking distance, a variety of nearby schools, and an array of shops and facilities within a couple of miles.

Additionally, the proximity to Birmingham, Nuneaton, Rugby, and Royal Leamington Spa, coupled with an excellent road network including the M6, M40, and M42, ensures easy access to surrounding areas - making Whitmore Place an ideal choice to put down roots!

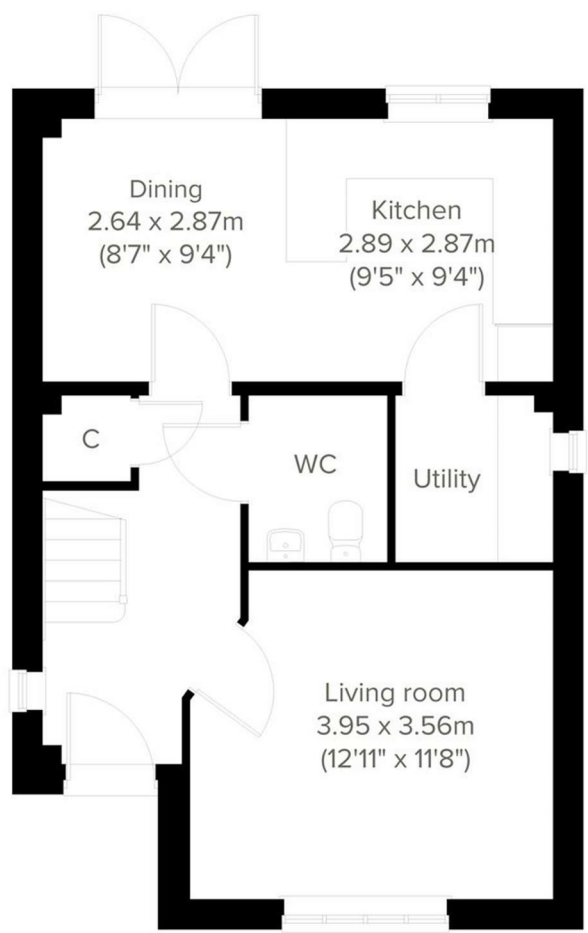
Indulge in modern living with this four-bedroom home, The Greenwood. The ground floor features a vibrant front-aspect living room, a spacious kitchen/dining room, a separate utility room, a convenient storage cupboard, and a downstairs WC.

Ascend to the first floor, where three bedrooms await, with bedroom two boasting an en suite and a shared family bathroom. On the second floor, discover the pinnacle of comfort in the master bedroom, complete with its own en suite bathroom and additional storage.

This property is located close to building works and has been priced accordingly due to some disruption.

Deposit: £1,990  
Tenancy Length: 12 Months  
Council Tax Band: TBC  
Available Now





Energy Efficiency Rating		Environmental Impact (CO <sub>2</sub> ) Rating	
Current	Potential	Current	Potential
94	94	A	A
85	94	B	A
76	94	C	A
67	94	D	A
58	94	E	A
49	94	F	A
40	94	G	A