



Petersmiths Park, Ollerton, NG22

£825 PCM

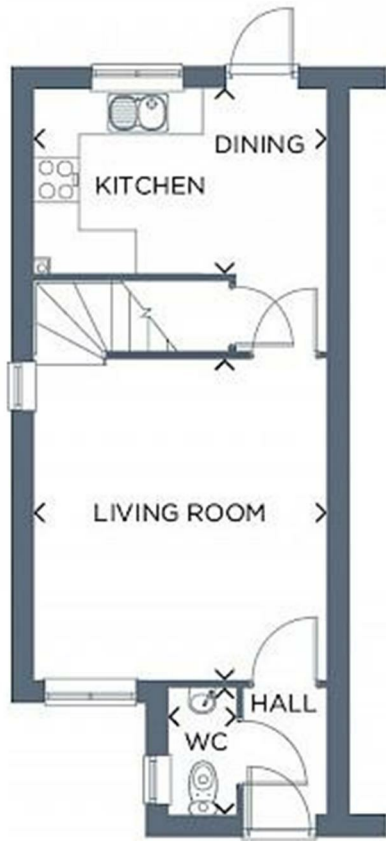
Welcome to this charming semi-detached house located in the picturesque Petersmiths Park, Ollerton. This delightful property boasts a cosy reception room, perfect for relaxing or entertaining guests. With two bedrooms, there is ample space for a small family or for those who enjoy having a guest room or home office. The property also features a well-maintained bathroom, ensuring convenience and comfort for its residents.

Situated in the serene surroundings of Petersmiths Park, this house offers a peaceful retreat from the hustle and bustle of everyday life. The semi-detached style provides a sense of privacy while still being part of a friendly neighbourhood community.

Whether you are looking to step onto the property ladder or seeking a new place to call home, this house in Ollerton presents a wonderful opportunity. Don't miss the chance to make this lovely property your own and enjoy the tranquillity and comfort it has to offer.

Deposit £950
Tenancy Length: 12 Months
Council Tax Band: TBA
Available Now





Energy Efficiency Rating		Environmental Impact (CO ₂) Rating	
Current	Potential	Current	Potential
83	97	B	B
82-81	96-95	C	C
81-77	94-90	D	D
76-72	88-85	E	E
71-69	82-80	F	F
68-65	75-73	G	G