



Whitmore Place, Coventry, CV6

£1,695 PCM

Welcome to Whitmore Place, a development offering homes to rent in the sought-after residential neighbourhood of Holbrooks, just 2.5 miles north of Coventry city centre. Embrace picturesque green open spaces within walking distance, a variety of nearby schools, and an array of shops and facilities within a couple of miles.

Additionally, the proximity to Birmingham, Nuneaton, Rugby, and Royal Leamington Spa, coupled with an excellent road network including the M6, M40, and M42, ensures easy access to surrounding areas - making Whitmore Place an ideal choice to put down roots!

Introducing the Rivington, an appealing family home meticulously crafted for contemporary living. This four-bedroom detached residence features an integral garage, a front-aspect living room, and a generously sized open-plan kitchen/dining room adorned with French doors that open onto the garden—perfect for both family life and entertaining friends.

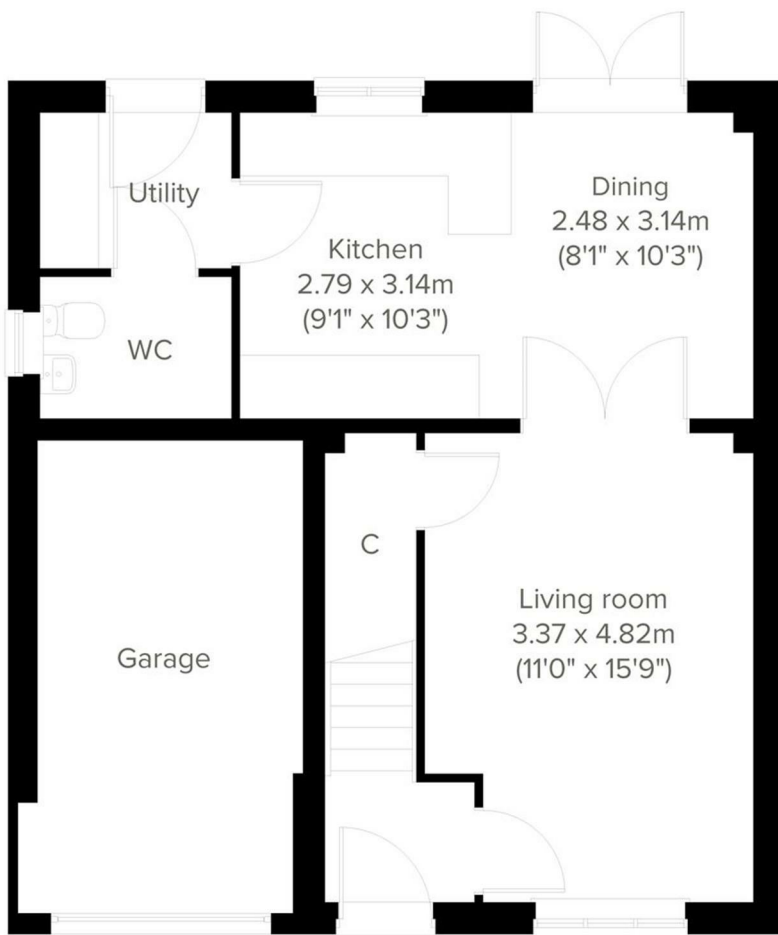
The charm continues on the upper floor, where the master bedroom offers an en suite bathroom, complemented by a roomy landing leading to three additional bedrooms, storage cupboards, and the main family bathroom.

Experience the ideal blend of modern design and functionality in the Rivington.

This property is located close to building works and has been priced accordingly due to some disruption.

Deposit £1,950
Tenancy Length: 12 Months
Council Tax Band: TBC
Available Now





Energy Efficiency Rating		Environmental Impact (CO ₂) Rating	
Current	Potential	Current	Potential
84	94	B	B
82-83	91-93	C	C
79-81	88-90	D	D
74-78	85-87	E	E
69-73	82-84	F	F
64-68	79-81	G	G