



Whitmore Place, Coventry, CV6

£1,350 PCM

Welcome to Whitmore Place, a development offering homes to rent in the sought-after residential neighbourhood of Holbrooks, just 2.5 miles north of Coventry city centre. Embrace picturesque green open spaces within walking distance, a variety of nearby schools, and an array of shops and facilities within a couple of miles.

Additionally, the proximity to Birmingham, Nuneaton, Rugby, and Royal Leamington Spa, coupled with an excellent road network including the M6, M40, and M42, ensures easy access to surrounding areas - making Whitmore Place an ideal choice to put down roots!

Tailored to fit a contemporary lifestyle, the three-bedroom Danbury presents a modern open-plan kitchen/dining room with direct access to the garden. Its spacious front-aspect living room is perfectly suited for entertaining.

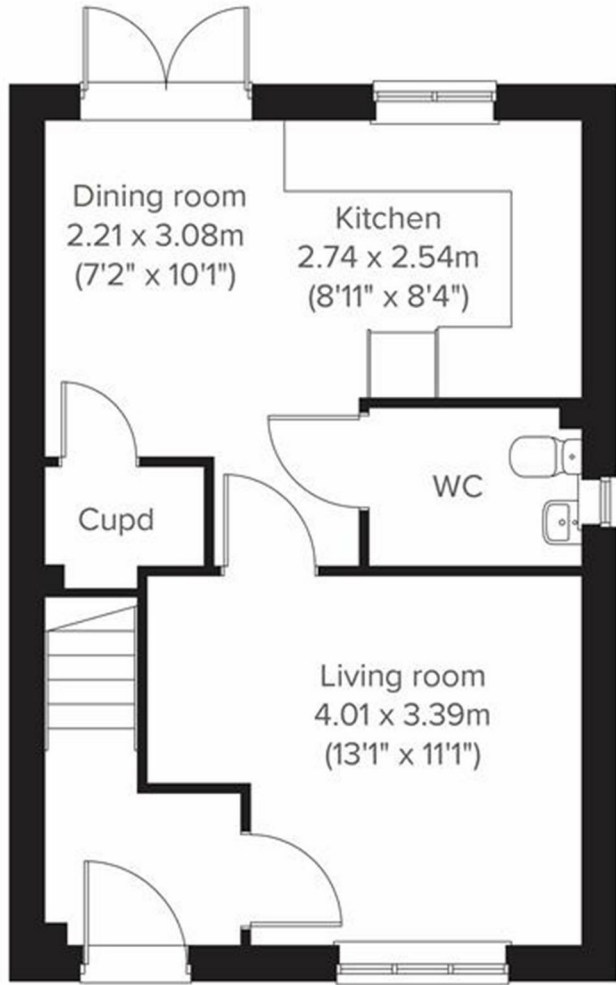
On the upper floor, discover a master bedroom featuring an en suite bathroom and two further well-proportioned bedrooms all accompanied by an elegant family-sized bathroom.

This appealing home caters to the needs of families and young professionals alike.

This property is located close to building works and has been priced accordingly due to some disruption.

Deposit: £1,550
Tenancy Length: 12 Months
Council Tax Band: TBC
Available Now





Energy Efficiency Rating		Environmental Impact (CO ₂) Rating	
Current	Potential	Current	Potential
84	96	B	B
82-83	94-95	C	C
79-81	91-93	D	D
74-78	88-90	E	E
69-73	85-87	F	F
64-68	82-84	G	G