



St Andrews Heights, Sutton In Ashfield, NG17

£1,325 Per Month

Discover the perfect blend of convenience and beauty at St Andrew's Heights, an exquisite new development featuring 2, 3, and 4-bedroom homes.

Nestled between the sought-after towns of Sutton-in-Ashfield and Mansfield, the location offers a tranquil setting surrounded by picturesque open fields.

Enjoy a range of amenities right on your doorstep or immerse yourself in the charm of the historic village of Skegby which is within walking distance.

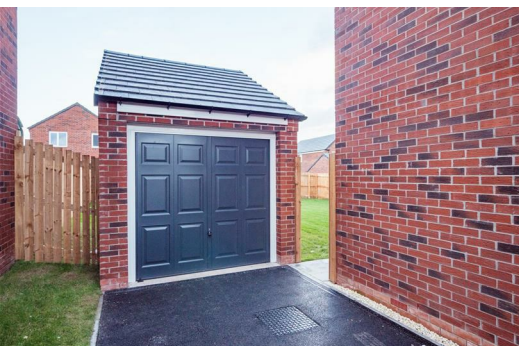
With excellent transport links, including the nearby Sutton Parkway railway station, connecting you to Mansfield, Worksop, and Nottingham, St Andrew's Heights offers the ideal combination of accessibility and natural splendour.

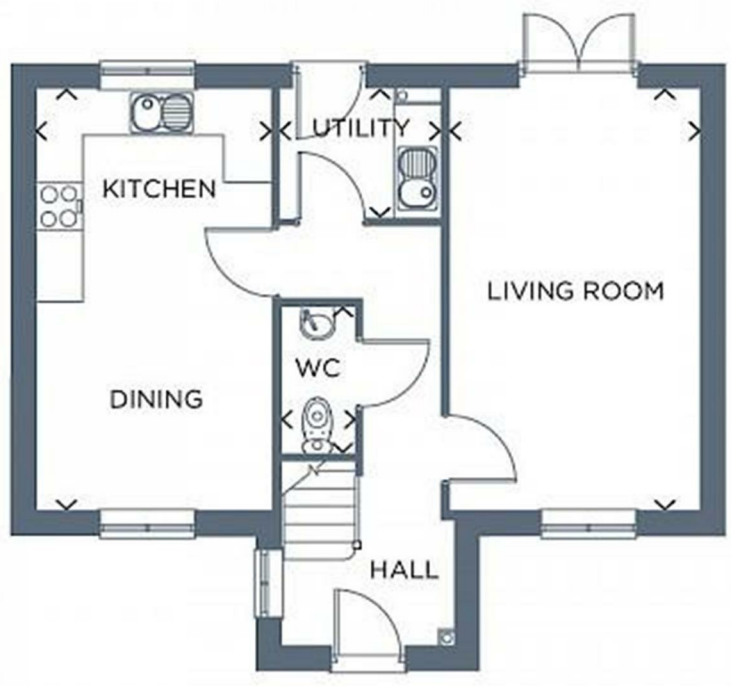
Welcome to The Carlow, a beautiful four-bedroom detached home available for rent. Prepare to be enchanted by the impeccable design and finish that define this remarkable property.

As you enter through the inviting hallway, you'll immediately notice the bright and spacious living room, offering a captivating view of the garden. Across the hallway, the contemporary open-plan kitchen-diner awaits. This stylish space is perfect for cooking up a storm and creates a seamless flow throughout the home.

Moving upstairs, you'll discover four good-sized bedrooms, each designed to provide ample space for relaxation and personalisation. The master bedroom takes the top prize with its luxurious en-suite bathroom, offering a sanctuary of elegance and tranquility.

For added convenience, this home also offers a useful utility room, downstairs WC and private drive.





Energy Efficiency Rating		Environmental Impact (CO ₂) Rating	
Current	Potential	Current	Potential
84	94	B	B
Energy Efficiency: 84 (Current), 94 (Potential) Energy Efficiency: 100 (Maximum)		Environmental Impact: B (Current), B (Potential) Environmental Impact: 100 (Maximum)	