



## Portland Fields, Sutton In Ashfield, NG17

£1,100 PCM

Welcome to Portland Fields Sutton In Ashfield - a charming semi-detached house that could be your next dream home! This property boasts a cosy reception room, perfect for relaxing with family and friends. With three bedrooms, there's plenty of space for everyone to enjoy. The bathroom is well-appointed and offers convenience for your daily routines.

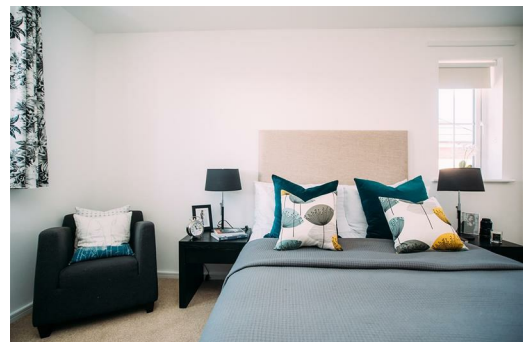
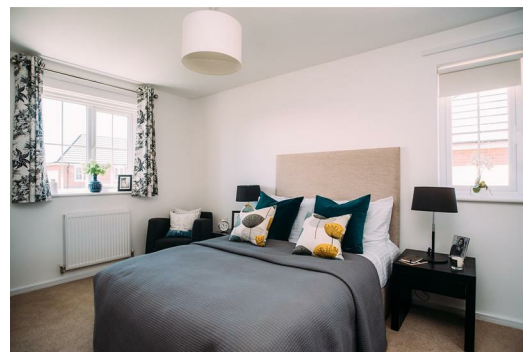
Situated in a peaceful neighbourhood, this house offers a tranquil retreat from the hustle and bustle of everyday life. The property also features parking space for one vehicle, ensuring that you never have to worry about finding a spot after a long day.

Don't miss out on the opportunity to make this house your own. Book a viewing today and discover the endless possibilities that this property has to offer.

Deposit: £1,260  
Tenancy Length: 12 Months  
Council Tax Band: TBC  
Available Now



14 Rothwell Close, Sutton In Ashfield, NG17 1DL



Energy Efficiency Rating		Environmental Impact (CO <sub>2</sub> ) Rating	
Current	Potential	Current	Potential
83	95	B	B
82-84	94	C	C
81-83	93	D	D
80-82	92	E	E
79-80	91	F	F
78-79	90	G	G