



Portland Fields, Sutton In Ashfield, NG17

£1,150 PCM

Welcome to this charming semi-detached house located in the picturesque Portland Fields of Sutton In Ashfield. This property boasts a cosy reception room, perfect for relaxing with family and friends. With three lovely bedrooms, there's ample space for a growing family or guests. The house features a well-maintained bathroom, ensuring convenience for all residents.

Situated in a serene neighbourhood, this property offers a peaceful retreat from the hustle and bustle of city life. The availability of parking space for one vehicle adds to the convenience of this lovely home, making it ideal for those with a car.

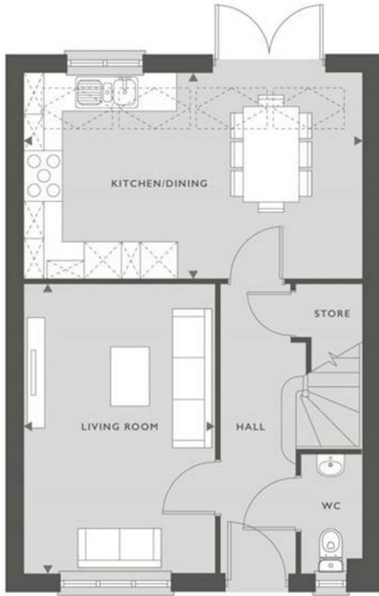
Whether you're looking for a place to call home or an investment opportunity, this semi-detached house in Portland Fields is sure to capture your heart. Don't miss out on the chance to own a piece of this tranquil and welcoming community.

Deposit: £1320
Tenancy Length: 12 Months
Council Tax Band: TBA
Available Now



18 Rothwell Close, Sutton In Ashfield, NG17 1DL

855 SQFT
79.4 MP



GROUND FLOOR

KITCHEN/DINING ROOM	5.34M X 3.29M	17'6" X 10'10"
LIVING ROOM	3.06M X 4.61M	10' X 15'2"

FIRST FLOOR

MASTER BEDROOM	2.71M X 3.33M	8'11" X 10'11"
BEDROOM 2	2.71M X 3.13M	8'11" X 10'4"
BEDROOM 3	2.56M X 1.97M	8'5" X 6'6"

- Skylight windows
- SVP



Energy Efficiency Rating		Environmental Impact (CO ₂) Rating	
Current	Potential	Current	Potential
83	95	B	B