



Whitmore Place, Coventry, CV6

£1,425 Per Month

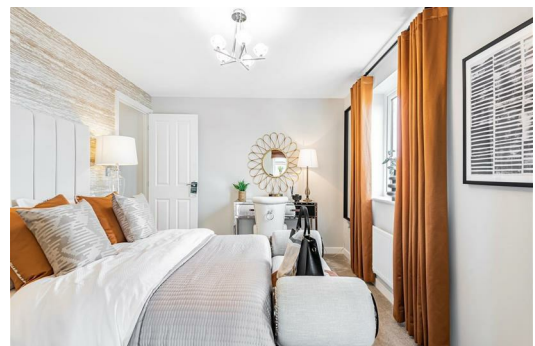
Welcome to Whitmore Place in Coventry! This stunning detached house is a gem waiting to be discovered. As you step inside, you are greeted by a spacious reception room, perfect for entertaining guests or simply relaxing with your loved ones.

With three cosy bedrooms, there is plenty of space for the whole family to unwind and recharge. The two bathrooms ensure that there will be no more morning queues, making hectic mornings a thing of the past.

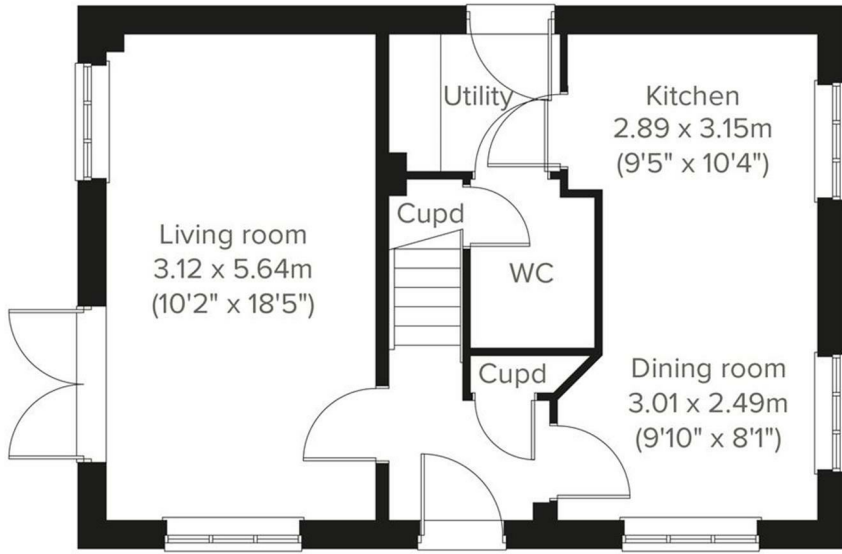
Nestled in a peaceful neighbourhood, this property offers the perfect blend of tranquility and convenience. Whether you fancy a leisurely stroll in the nearby parks or a quick trip to the local shops, everything you need is just a stone's throw away.

This charming house is not just a property, it's a place where memories are made and cherished. Don't miss out on the opportunity to make this house your home. Contact us today to arrange a viewing and take the first step towards creating your own slice of paradise in Coventry.

Deposit: £1,640
Tenancy Length: 12 Months
Council Tax Band: TBC
Available Now



1 Firecrest Close, Coventry, CV6 4RB



Energy Efficiency Rating		Environmental Impact (CO ₂) Rating	
Current	Potential	Current	Potential
95	95	B	B
84	95	B	B
73	95	C	B
62	95	D	B
51	95	E	B
40	95	F	B
29	95	G	B