



Petersmiths Park, Ollerton, NG22

£825 Per Month

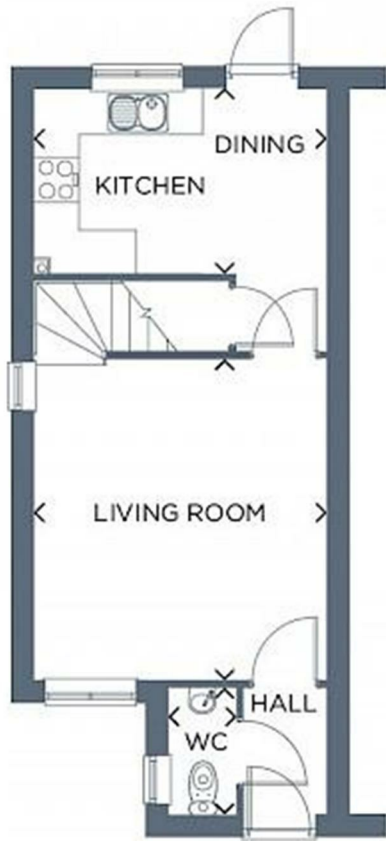
Welcome to this charming semi-detached house located in the picturesque Petersmiths Park, Ollerton. This delightful property boasts a cosy reception room, perfect for relaxing or entertaining guests. With two bedrooms, there is ample space for a small family or for those who enjoy having a guest room or home office. The property also features a well-maintained bathroom, ensuring convenience and comfort for its residents.

Situated in the serene surroundings of Petersmiths Park, this house offers a peaceful retreat from the hustle and bustle of everyday life. The semi-detached style provides a sense of privacy while still being part of a friendly neighbourhood community.

Whether you are looking to step onto the property ladder or seeking a new place to call home, this house in Ollerton presents a wonderful opportunity. Don't miss the chance to make this lovely property your own and enjoy the tranquillity and comfort it has to offer.

Deposit: £950  
Tenancy Length: 12 Months  
Council Tax Band: TBA  
Available Now





Energy Efficiency Rating		Environmental Impact (CO <sub>2</sub> ) Rating	
Current	Potential	Current	Potential
83	97		
Energy Efficiency - Super-Low Energy Costs 95-100 A 85-94 B 75-84 C 65-74 D 55-64 E 45-54 F 35-44 G		Environmental Impact - Super-Low CO <sub>2</sub> emissions 100-120 A 80-99 B 60-79 C 40-59 D 20-39 E 10-19 F 0-9 G	
Energy Efficiency - Typical Energy Costs		Environmental Impact - Typical CO <sub>2</sub> emissions	