



Haresfield Lane, Hardwick, Gloucester

£1,925 PCM

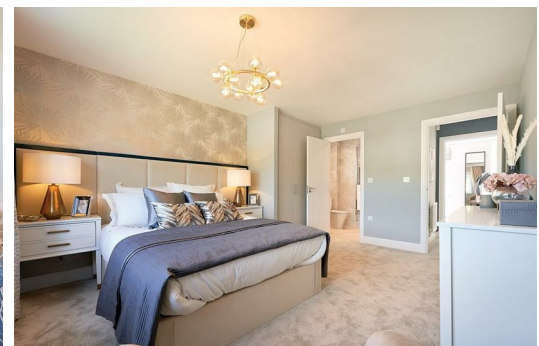
Welcome to this charming detached house located at Hunts Grove in the picturesque village of Hardwick, Gloucester. This property boasts a spacious living space, perfect for a growing family looking for their dream home.

As you step inside, you are greeted by a warm and inviting reception room, ideal for entertaining guests or simply relaxing with your loved ones. With four generously sized bedrooms, there is plenty of space for everyone to enjoy their own private sanctuary within the house.

The two bathrooms ensure that there will be no more morning rush-hour traffic jams, allowing everyone to get ready for the day ahead with ease. Additionally, the parking space for three vehicles means that you will never have to worry about finding a spot for your car after a long day at work.

Don't miss out on the opportunity to make this house your home. Contact us today to arrange a viewing and take the first step towards creating a lifetime of memories in this wonderful property.

Deposit: £2220
Council Tax: TBA
Tenancy Length: 12 Months
Available Now



30 Sabrina Close, Hardwicke, Gloucester, GL2 4EZ



Energy Efficiency Rating		Environmental Impact (CO ₂) Rating	
Score	Band	Score	Band
97	A	84	B
84	B	71	C
71	C	58	D
58	D	45	E
45	E	32	F
32	F	19	G
19	G	6	H