



## Haresfield Lane, Hardwick, Gloucester

£1,895 Per Month

Everyone needs a special place to call their own, and that's exactly what you get with The Chestnut. A truly spectacular 4-bed detached home for rent!

As you step into the heart of this home, you'll find a centrally located downstairs WC, offering convenience for all. The light-filled and spacious sitting room provides a relaxing haven for the entire family, while the downstairs home office offers ample workspace for various needs.

The open-plan kitchen/dining area, complete with integrated appliances, spans the width of the house, seamlessly connecting indoor and outdoor living through patio doors that lead to the rear garden.

Venturing upstairs, you'll encounter four generously proportioned bedrooms, ensuring that each family member has their own special space to take pride in.

The master bedroom features a built-in wardrobe and a private en-suite bathroom, adding a touch of luxury to your daily routine. Completing the picture of tranquility, the family bathroom is adorned with soothing neutral tiles, providing the ideal space to unwind.

That's not all - outside, you'll have a private driveway as well as front and rear gardens!

Nearby there are schools, supermarkets, shops, a doctor's surgery, and community facilities. Gloucester railway station runs services to London Paddington, Bristol, Worcester, and Cardiff and buses operate regularly from Quedgeley to the city centre.

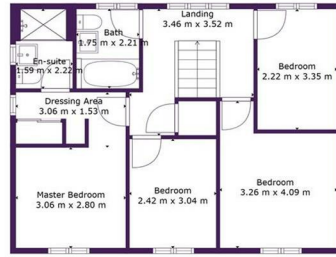




28 Sabrina Close, Hardwick, Gloucester, GL2 4EZ



Floor 1



Floor 2



**Ascend**

**TOTAL: 116 m2**  
 FLOOR 1: 57 m2, FLOOR 2: 59 m2  
 EXCLUDED AREAS: LOW CEILING: 2 m2, GARAGE: 22 m2  
Measurements Are Calculated By Cubicasa Technology. Deemed Highly Reliable But Not Guaranteed.



Energy Efficiency Rating		Environmental Impact (CO <sub>2</sub> ) Rating	
Energy Efficiency	Score	Environmental Impact	Score
Best Energy Efficiency - Super Low Energy	93	Best Environmental Impact - Super Low CO <sub>2</sub> emissions	93
A	85	A	85
B	79	B	79
C	73	C	73
D	67	D	67
E	61	E	61
F	55	F	55
G	49	G	49
Worst Energy Efficiency - Super High Energy	1	Worst Environmental Impact - Super High CO <sub>2</sub> emissions	1