



Brookfields Place, Coventry

£1,375 PCM

Welcome to Whitmore Place, a development offering homes to rent in the sought-after residential neighbourhood of Hollbrooks, just 2.5 miles north of Coventry city centre.

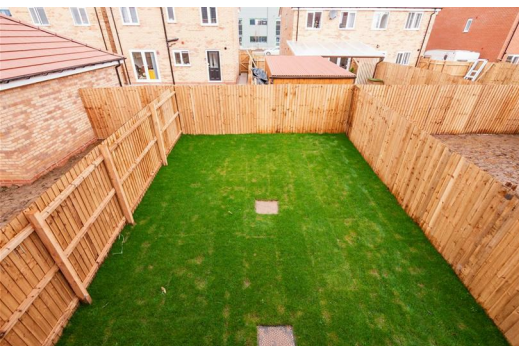
Embrace picturesque green open spaces within walking distance, a variety of nearby schools, and an array of shops and facilities within a couple of miles.

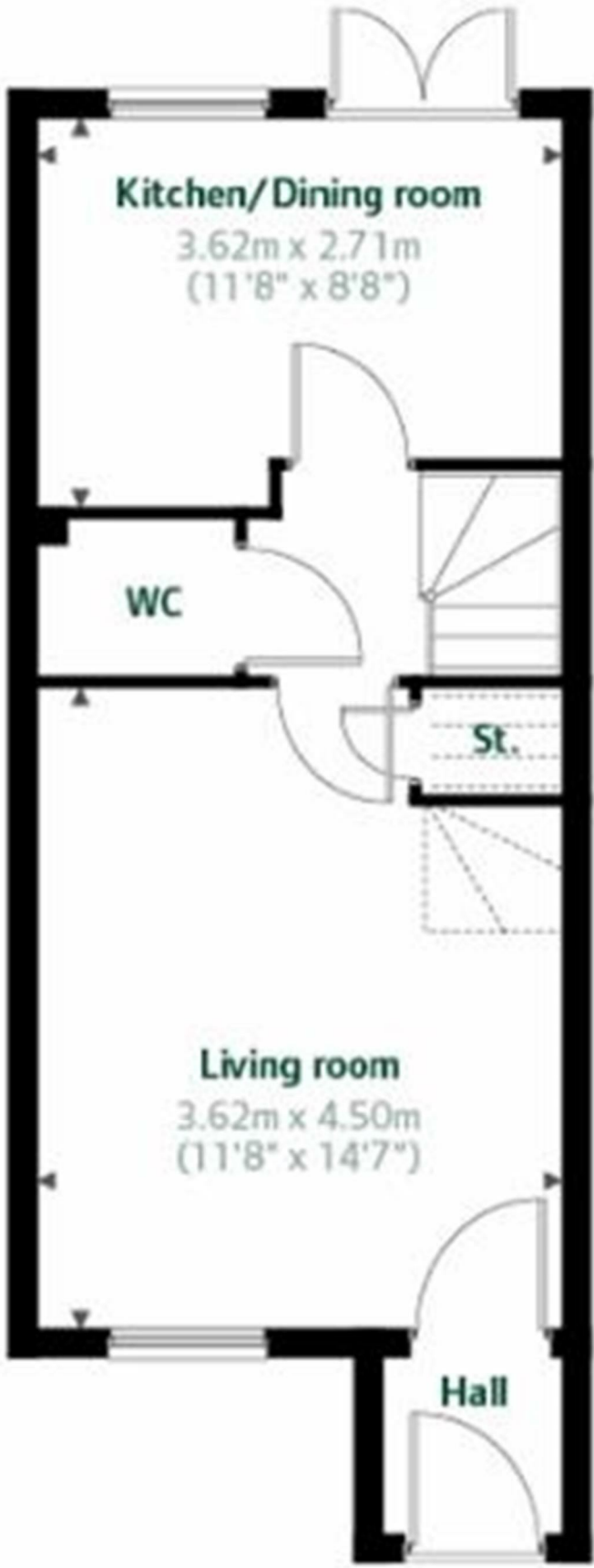
The Windermere is a flexible three bedroom home that adapts effortlessly to your lifestyle. For growing families, the second floor offers a master bedroom with a private ensuite bathroom, ensuring comfort and space. Alternatively, for young professionals, you'll appreciate the option to have a guest bedroom and bathroom as well as a home office. Embrace the functionality of this new home that caters to various needs, providing a space that truly works for you.

Additionally, the proximity to Birmingham, Nuneaton, Rugby, and Royal Leamington Spa, coupled with an excellent road network including the M6, M40, and M42, ensures easy access to surrounding areas - making Whitmore Place an ideal choice to put down roots!

This property is located close to building works and has been priced accordingly due to some disruption.

Deposit £1580
Unfurnished
Council Tax TBA
Available Now





| Energy Efficiency Rating | | Environmental Impact (CO ₂) Rating | |
|--|-----------|---|-----------|
| Current | Potential | Current | Potential |
| 84 | 96 | | |
| 95-100 A 85-94 B 75-84 C 65-74 D 55-64 E 45-54 F 35-44 G | | 100-120 A 80-99 B 60-79 C 40-59 D 20-39 E 10-19 F 0-9 G | |
| <small>For energy efficient - Super-Low Carbon</small> | | <small>For environmentally friendly - Super-ECO Homes</small> | |