



Hunts Grove, Hardwick, Gloucester

£1,650 PCM

Welcome to a vibrant new community at Oaklands, Hunts Grove in Hardwicke! Nestled on the doorstep of the city of Gloucester, this brand-new collection of 3 and 4 bedroom homes is a dream come true.

Experience a modern twist on a traditional design with The Cypress, a spacious and captivating 3-bed detached home.

Step inside and you'll be welcomed by a generously proportioned hallway, setting the stage for the spacious and sunlit living room. The centerpiece of this room is a beautiful bay window, casting an enchanting glow throughout. Continuing down the corridor, you'll discover convenient under-the-stairs storage space and a WC.

At the rear of the house, a stylish open-plan kitchen/dining area awaits, complete with integrated appliances and French doors leading out into the garden. Not to be overlooked is the practical utility room, a valuable addition to any household.

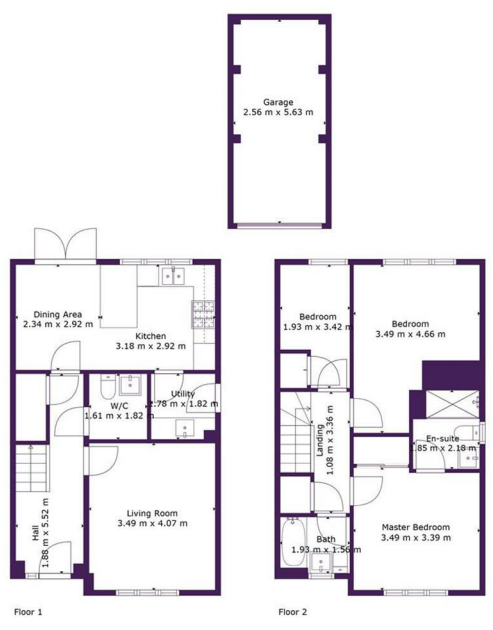
Venturing upstairs, you'll find a well-appointed three-piece family bathroom, a versatile single bedroom ideal for use as an office or bedroom, a comfortable double bedroom, and the master bedroom featuring an en-suite bathroom and built-in wardrobe, ensuring ample storage space for maximum comfort.

That's not all - outside, you'll have a private driveway as well as front and rear gardens!

Nearby there are schools, supermarkets, shops, a doctor's surgery, and community facilities. Gloucester railway station runs services to London Paddington, Bristol, Worcester, and Cardiff and buses operate regularly from Quedgeley to the city centre.



2 Sabrina Close, Hardwick, Gloucester, GL2 4EZ



TOTAL: 98 m2
FLOOR 1: 49 m2, FLOOR 2: 49 m2
EXCLUDED AREAS: GARAGE: 14 m2
Measurements Are Calculated By Cubicasa Technology, Deemed Highly Reliable But Not Guaranteed.

Ascend



Energy Efficiency Rating		Environmental Impact (CO ₂) Rating	
Current	Potential	Current	Potential
84	94	B	B