



Portland Fields, Sutton In Ashfield, NG17

£1,295 PCM

We proudly offer a beautiful collection of 2 to 4 bedroom homes in the market town of Sutton in Ashfield. With an abundance of local amenities, schools for all ages and great transport links, Portland Field is the ideal spot for those searching for a tranquil retreat with all the conveniences of modern living right on the doorstep.

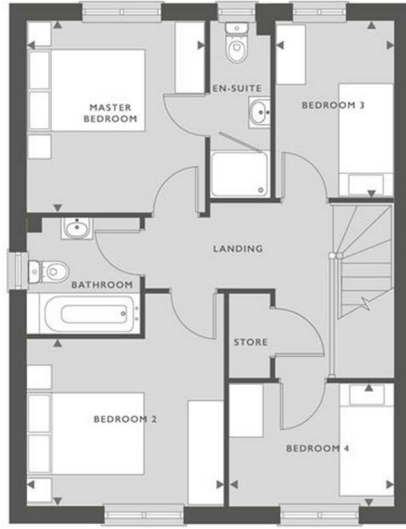
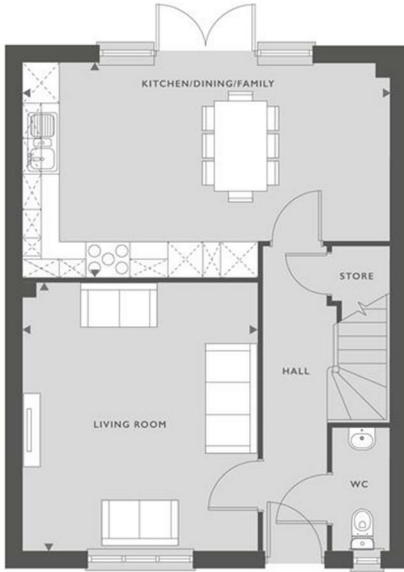
The Dee:

- Four bedroom modern property
- Stylish open-plan living room with French doors leading to rear garden
- Fully fitted modern kitchen with integrated white goods
- Two spacious double bedrooms and a third bedroom that can also be used as an office
- Modern family bathroom with separate shower cubicle decorated with Porcelanosa tiles
- Convenient downstairs WC



21 Butterworth Road,, Sutton-In-Ashfield, NG17 1DL

1062 SQFT
98 M²



GROUND FLOOR

KITCHEN/DINING/FAMILY	6.21M X 3.59M	20'3" X 11'7"
LIVING ROOM	5.33M X 3.97M	17'4" X 13'

FIRST FLOOR

MASTER BEDROOM	3.24M X 2.99M	10'6" X 9'8"
BEDROOM 2	3.32M X 2.83M	10'8" X 9'2"
BEDROOM 3	2.99M X 1.99M	9'8" X 6'5"
BEDROOM 4	2.78M X 2.08M	9'1" X 6'8"

■ SVP



Energy Efficiency Rating		Environmental Impact (CO ₂) Rating	
Band	Score	Band	Score
A	92-100	A	35-45
B	81-91	B	46-55
C	69-80	C	56-65
D	55-68	D	66-75
E	39-54	E	76-85
F	21-38	F	86-95
G	1-20	G	96-100