



## Haresfield Lane, Hardwick, Gloucester

£1,580 PCM

If you're looking for a standout home, The Hazel is for you. This impressive house has a character and style all of its own.

Upon entering, you'll discover the front-facing living room, which is a bright and airy space adorned with a generously sized feature window that floods the room with natural light. Continuing through the hallway, you'll come across a convenient WC and understairs storage cupboard.

This then leads you into a chic open-plan kitchen and dining area where modern, sleek cupboards and integrated appliances create an ideal setting for family meals and entertaining friends. Patio doors lead you out into the rear garden, seamlessly merging indoor and outdoor living, perfect for creating an al fresco dining experience.

Venturing upstairs, you'll find the master bedroom at the front of the house greets you with its own feature window. It comes equipped with an en-suite bathroom, providing added convenience and luxury. Additionally, there is a spacious double bedroom and a cosy single bedroom, perfect for unwinding and relaxing.

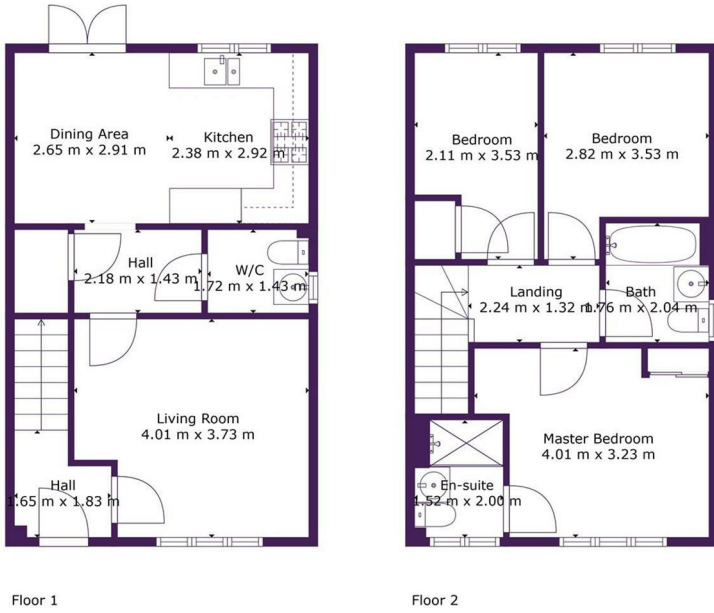
To complete this captivating home, you'll find a three-piece family bathroom adorned with neutral white tiles, contributing to the home's overall appeal.

That's not all - outside, you'll have a private driveway as well as front and rear gardens.

Nearby there are schools, supermarkets, shops, a doctor's surgery, and community facilities. Gloucester railway station runs services to London Paddington, Bristol, Worcester, and Cardiff and buses operate regularly from Quedgeley to the city centre.



14 Haresfield Lane, Hardwick, Gloucester, GL2 4EQ



**Ascend**

**TOTAL: 84 m<sup>2</sup>**  
**FLOOR 1: 42 m<sup>2</sup>, FLOOR 2: 42 m<sup>2</sup>**  
Measurements Are Calculated By Cubicasa Technology, Deemed Highly Reliable But Not Guaranteed.



Energy Efficiency Rating		Environmental Impact (CO <sub>2</sub> ) Rating	
Current	Potential	Current	Potential
84	95	G	G
<small>Energy Efficiency - Super Savings Guide</small> A100 (95-100) A (81-94) B (69-80) C (55-68) D (39-54) E (21-38) F (9-20) G (1-8)		<small>Environmental Impact - Super Savings Guide</small> A100 (0-10) A (11-20) B (21-30) C (31-40) D (41-50) E (51-60) F (61-70) G (71-80)	