



Coseley New Village, Tipton

£1,395 PCM

Benefit from an array of LOCAL AMENITIES in the surrounding area. The LOCATION could not be more conveniently placed.

LOCATION & TRAVEL

Discover the charm of Coseley New Village, a welcoming community nestled between Wolverhampton, Dudley, and Wednesbury. Positioned within the wider West Midlands metropolitan area, with easy access to Birmingham, this development offers a range of two & three bedroom houses to rent, catering to growing families, young professionals, and downsizers alike.

LOCAL COMMUNITY & BEYOND

The local neighbourhood and close-by big city provide a diverse array of amenities, from convenient nearby supermarkets to a wide selection of high street stores within Birmingham City Centre, as well as dining options and a lively nightlife all within easy reach. Additionally, for those seeking a peaceful retreat, the scenic Shropshire countryside is just a short distance to the west. Embrace the perfect blend of urban and rural living in this delightful community.

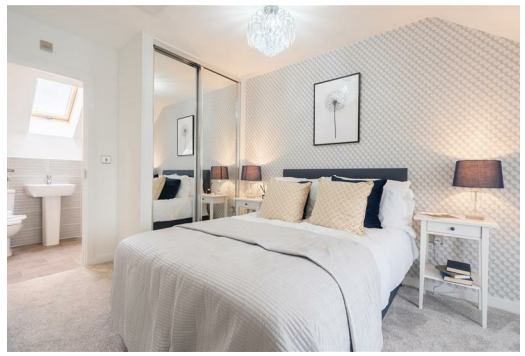
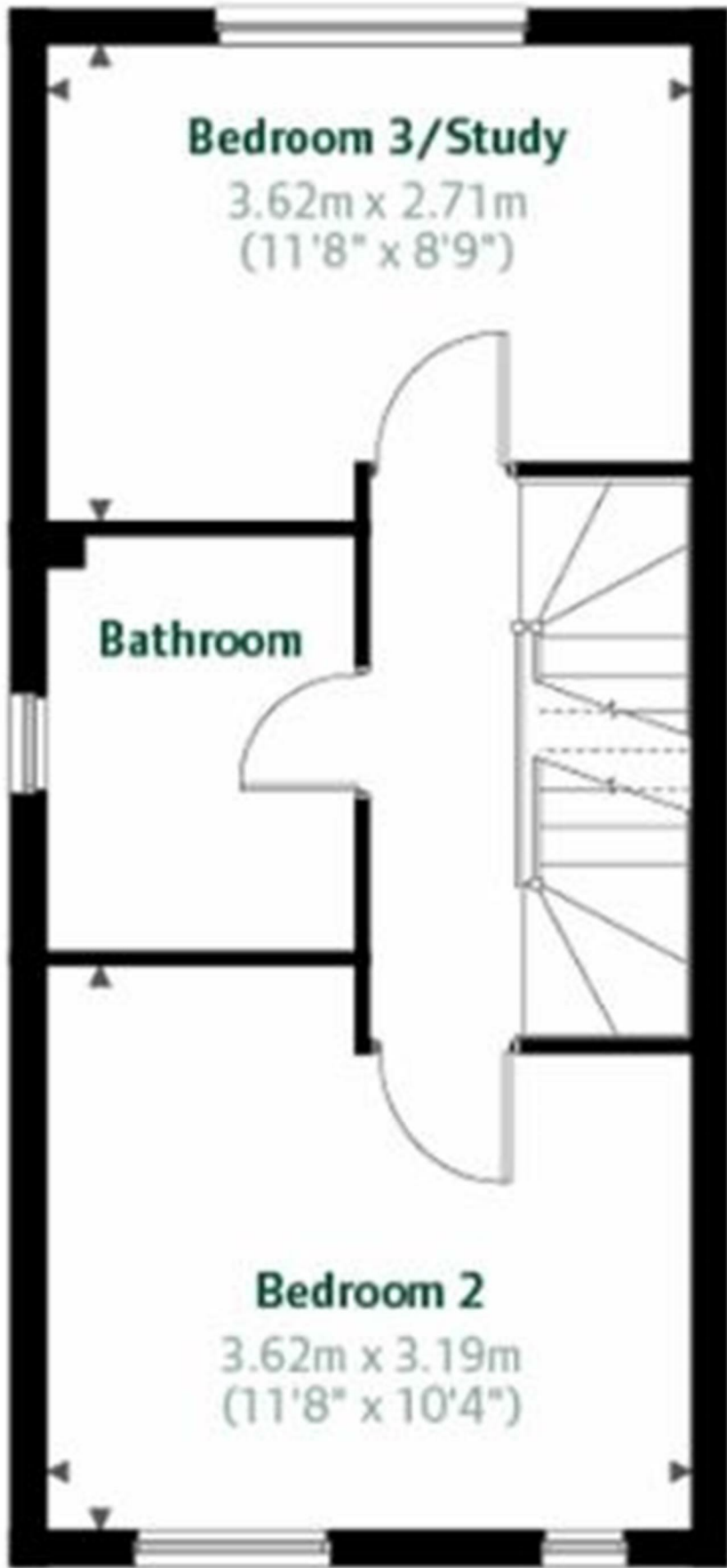
THE WINDERMERE

ABOUT THIS HOME

The Windermere is a flexible three bedroom home that adapts effortlessly to your lifestyle.

For growing families, the second floor offers a master bedroom with a private ensuite bathroom, ensuring comfort and space. Alternatively, for young professionals, you'll appreciate the option to have a guest bedroom and bathroom as well as a home office.





Energy Efficiency Rating		Environmental Impact (CO ₂) Rating	
Current	Potential	Current	Potential
 84	94	 B	 C