



**FIRST
MONTH'S RENT
FREE***

Rothwell Close, Sutton In Ashfield

£1,100 PCM

FIRST MONTHS RENT FREE!

Are you looking for your next home in Sutton in Ashfield. Now is the perfect time to make a move! For a limited time only we are excited to offer the First Month's Rent Free on selected properties. This exclusive offer is designed to help you settle into your new home with one less thing to worry about.

LOCATION AND TRAVEL

Nestled between the sought-after towns of Sutton-in-Ashfield and Mansfield, the location offers a tranquil setting surrounded by picturesque open fields. With excellent transport links, including the nearby Sutton Parkway railway station, connecting you to Mansfield, Worksop, and Nottingham, St Andrew's Heights offers the ideal combination of accessibility and natural splendour."

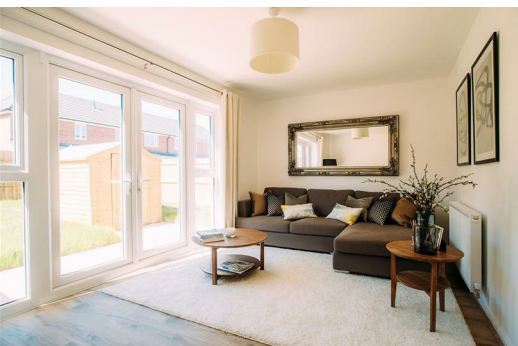
COMMUNITY AND BEYOND

Enjoy a range of amenities right on your doorstep or immerse yourself in the charm of the historic village of Skegby which is within walking distance.

THE WEAVER

ABOUT THIS HOME

- Three bedroom modern property



8 Rowwell Close, Sutton In Ashfield, NG17 1DL



Energy Efficiency Rating		Environmental Impact (CO ₂) Rating	
Current	Potential	Current	Potential
84	96	B	B
83-84	95	C	C
82-83	94	D	D
81-82	93	E	E
80-81	92	F	F
79-80	91	G	G