



Brookfields Place, Coventry

£1,525 PCM

Welcome to Whitmore Place, a development offering homes to rent in the sought-after residential neighbourhood of Holbrooks, just 2.5 miles north of Coventry city centre.

Embrace picturesque green open spaces within walking distance, a variety of nearby schools, and an array of shops and facilities within a couple of miles.

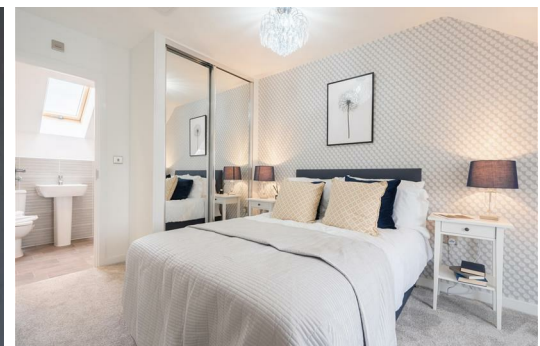
Additionally, the proximity to Birmingham, Nuneaton, Rugby, and Royal Leamington Spa, coupled with an excellent road network including the M6, M40, and M42, ensures easy access to surrounding areas - making Whitmore Place an ideal choice to put down roots!

The Windermere is a flexible three bedroom home that adapts effortlessly to your lifestyle.

For growing families, the second floor offers a master bedroom with a private ensuite bathroom, ensuring comfort and space. Alternatively, for young professionals, you'll appreciate the option to have a guest bedroom and bathroom as well as a home office.

Embrace the functionality of this new home that caters to various needs, providing a space that truly works for you.

Deposit £1,750
Tenancy Length: 12 Months
Council Tax Band: TBC
Available Now



26 Goodwin Road, Coventry, CV6 4QN



Energy Efficiency Rating		Environmental Impact (CO ₂) Rating	
Current	Potential	Current	Potential
95	96	B	B
84		B	B
		C	C
		D	D
		E	E
		F	F
		G	G