



St Andrews Heights, Sutton in Ashfield, NG17

£890

Discover the perfect blend of convenience and beauty at St Andrew's Heights, an exquisite new development featuring 2, 3, and 4-bedroom homes.

The Cork is an exceptional two-bedroom property available for rent. Step into this stunning home and experience a modern living environment designed to elevate your lifestyle.

Upon entering, you'll be welcomed into an inviting living room, thoughtfully designed to provide a comfortable space for relaxing and getting cosy on the sofa. The modern and fresh kitchen-diner awaits, offering the ideal setting for culinary delights and shared meals. Open the French doors and step out onto the rear garden, where you can bask in the beauty of the outdoors.

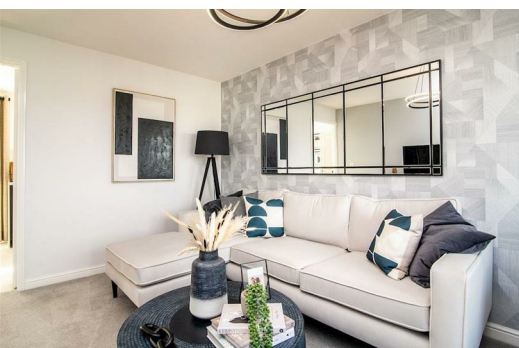
As you make your way upstairs, you'll discover two generously sized bedrooms, providing the perfect place to call it a night. There's also a family-sized bathroom, offering a well-appointed sanctuary for your daily routines.

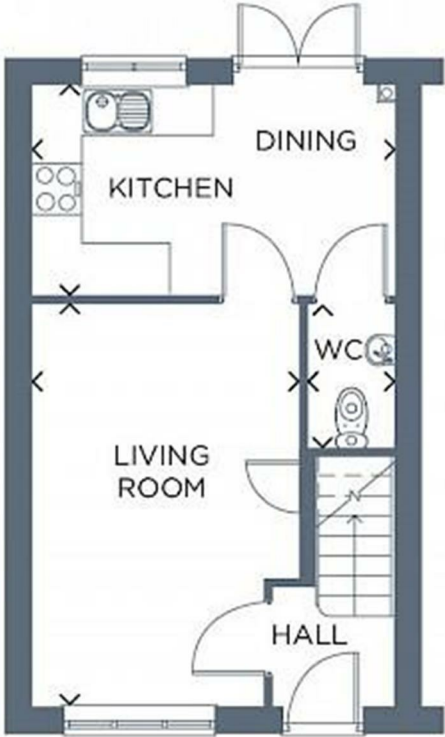
Completing this home perfectly is a detached garage, providing secure parking and additional storage options.

Nestled between the sought-after towns of Sutton-in-Ashfield and Mansfield, the location offers a tranquil setting surrounded by picturesque open fields.

Enjoy a range of amenities right on your doorstep or immerse yourself in the charm of the historic village of Skegby which is within walking distance.

With excellent transport links, including the nearby Sutton Parkway railway station, connecting you to Mansfield, Worksop, and Nottingham, St Andrew's Heights offers the ideal combination of accessibility and natural splendour.





Energy Efficiency Rating		Environmental Impact (CO ₂) Rating	
Band	Score	Band	Score
A	92-100	A	1-10
B	81-91	B	11-20
C	69-80	C	21-30
D	55-68	D	31-40
E	39-54	E	41-50
F	13-38	F	51-60
G	1-12	G	61-70