



Portland Fields, Sutton In Ashfield, NG17

£1,150 PCM

Welcome to this charming semi-detached house located in the picturesque Portland Fields of Sutton In Ashfield. This property boasts a cosy reception room, perfect for relaxing with family and friends. With three lovely bedrooms, there's ample space for everyone to enjoy a good night's sleep.

The house features a well-maintained bathroom, ensuring convenience and comfort for all residents. Situated in a peaceful neighbourhood, this property offers a tranquil retreat from the hustle and bustle of everyday life.

Parking is made easy with space for one vehicle, providing convenience for those with a car. Whether you're looking for a new family home or a peaceful abode to call your own, this semi-detached house in Portland Fields is sure to capture your heart. Don't miss out on the opportunity to make this lovely property your own!

Deposit: £1,320
Council Tax Band TBA
Unfurnished
Available Now

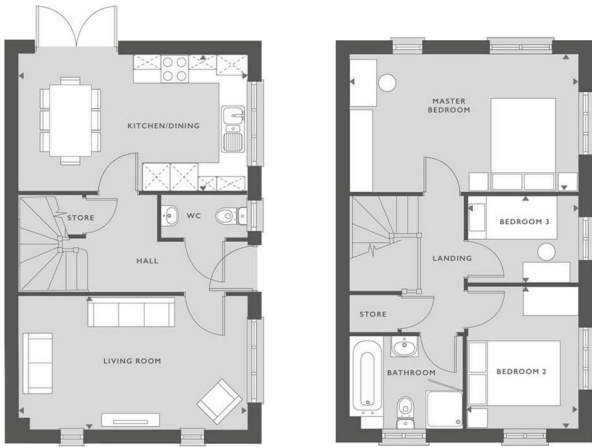


32 Rothwell Close, Sutton-in-Ashfield, NG17 1DL

THE GRANTHAM

THREE BEDROOM HOME

850 SQFT
79.0 M²



GROUND FLOOR

KITCHEN/DINING	4.89M X 2.95M	16' X 9'8"
LIVING ROOM	4.89M X 2.84M	16' X 9'4"

FIRST FLOOR

MASTER BEDROOM	4.89M X 2.95M	16' X 9'8"
BEDROOM 2	2.99M X 2.37M	9'9" X 7'9"
BEDROOM 3	2.37M X 1.87M	7'9" X 6'1"

■ SVP



Energy Efficiency Rating		Environmental Impact (CO ₂) Rating	
Very energy efficient - lower running costs	Worse	Very environmentally friendly - lower CO ₂ emissions	Worse
A		A	
B		B	
C		C	
D		D	
E		E	
F		F	
G		G	
Very energy inefficient - higher running costs		Very environmentally unfriendly - higher CO ₂ emissions	