



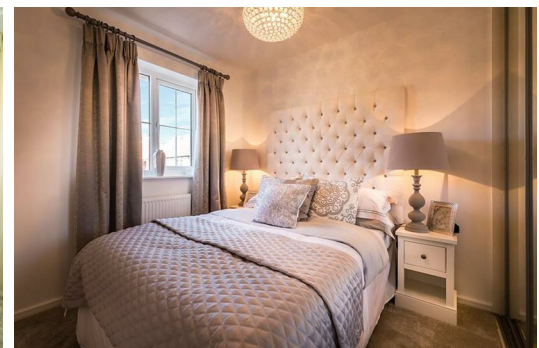
## Portland Fields, Sutton In Ashfield, NG17

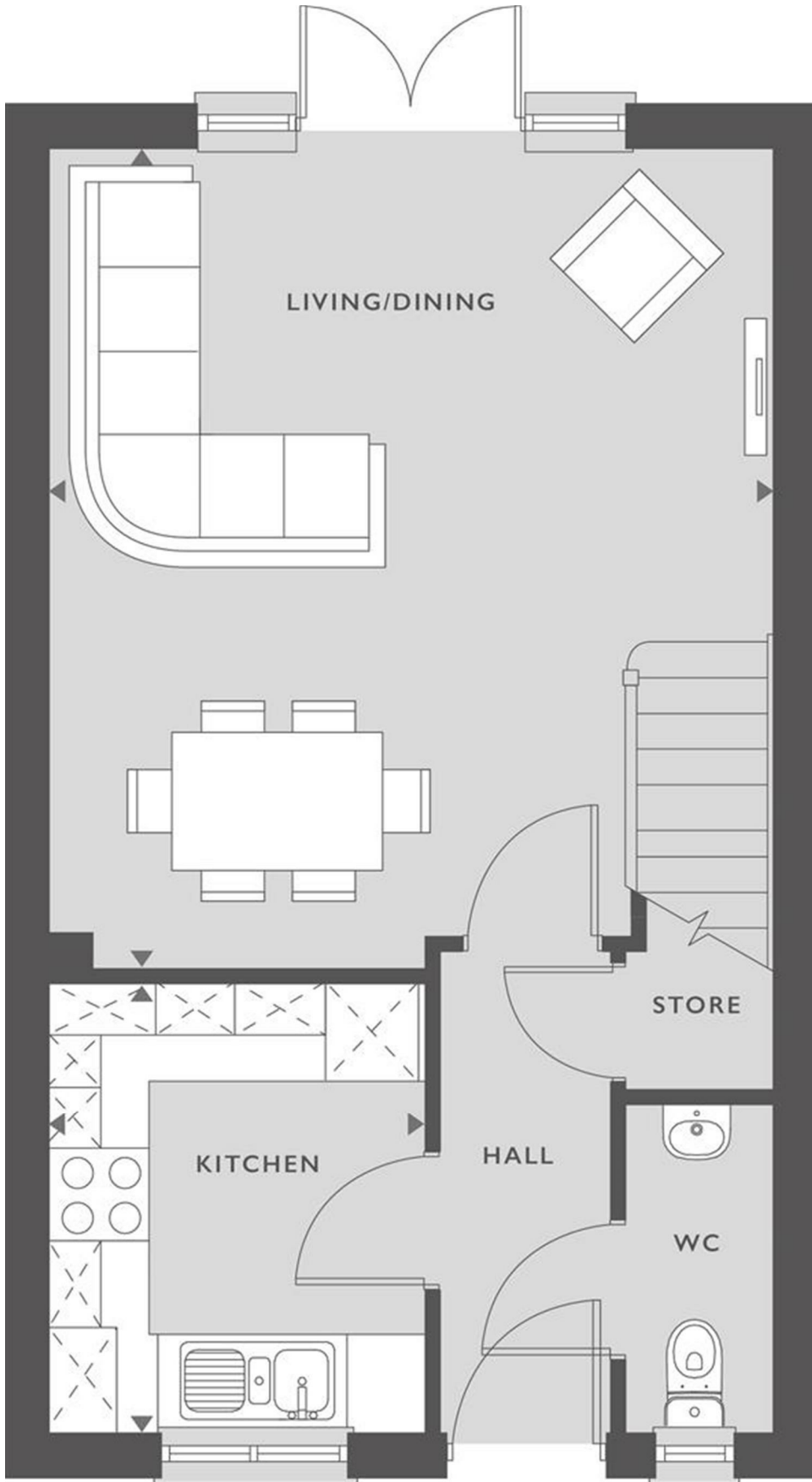
£1,050 PCM

We proudly offer a beautiful collection of 2 to 4 bedroom homes in the market town of Sutton in Ashfield. With an abundance of local amenities, schools for all ages and great transport links, Portland Field is the ideal spot for those searching for a tranquil retreat with all the conveniences of modern living right on the doorstep.

The Ashton:

- Three bedroom modern property
- Stylish open-plan living/dining room with French doors leading to rear garden
- Two spacious double bedrooms and a third bedroom that can also be used as an office
- Modern family bathroom with separate shower cubicle decorated with Porcelanosa tiles
- Convenient downstairs WC
- Parking





Energy Efficiency Rating		Environmental Impact (CO <sub>2</sub> ) Rating	
Current	Potential	Current	Potential
 83	 96	 B	 C