



Foxfields, Stoke-on-Trent

£1,125 PCM

Indulge in the serenity of your private GARDEN, providing a peaceful retreat to soak up the SUNSHINE within the comforts of your stunning NEW HOME. Available Now.

LOCATION AND TRAVEL

For family moments, the picturesque Peak District National Park is within reach, whilst the thrill of Alton Towers is less than 10 miles away. Benefitting from excellent regional access, Stoke-on-Trent train station easily links you to Liverpool, Manchester & Birmingham. You'll have plenty of supermarkets, retail stores, pubs, restaurants, cafes, parks & leisure activities at your fingertips whilst living at this development.

THE SUTTON

ABOUT THIS HOME

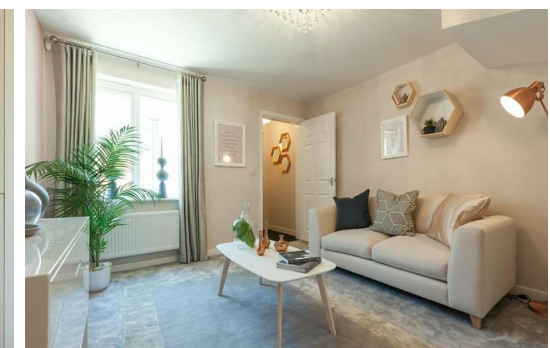
The Sutton is a flexible home that suits the needs of families of all shapes and sizes.

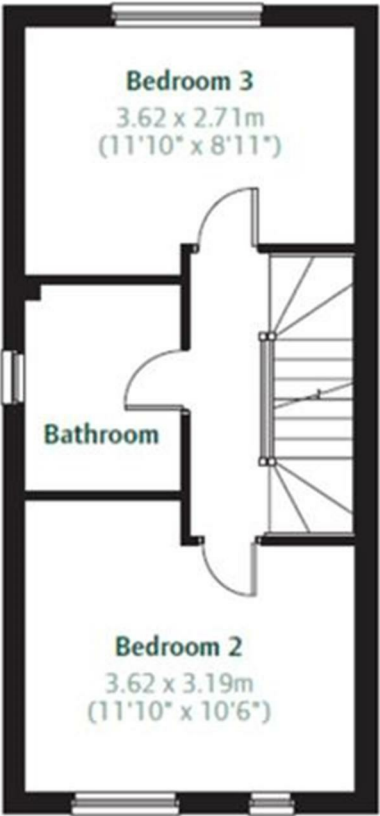
THE KITCHEN & LIVING

The ground floor features an open-plan kitchen/dining room with French doors seamlessly connecting to the garden, as well as a bright living room, under-stairs storage cupboard and WC.

THE BEDROOMS

Up on the first floor, you'll find two generously sized bedrooms and the main family bathroom.





Energy Efficiency Rating		Environmental Impact (CO ₂) Rating	
Energy Efficiency	Score	Environmental Impact	Score
Very energy efficient - Super-Low Carbon	A	Very environmentally friendly - Super-Low Carbon	A
Energy efficient - Low Carbon	B	Environmentally friendly - Low Carbon	B
Decent energy efficiency - Moderate Carbon	C	Decent environmental friendliness - Moderate Carbon	C
Energy efficiency - Average Carbon	D	Average environmental friendliness - Average Carbon	D
Decent energy efficiency - High Carbon	E	Decent environmental friendliness - High Carbon	E
Energy efficiency - High Carbon	F	Average environmental friendliness - High Carbon	F
Decent energy efficiency - Super-High Carbon	G	Decent environmental friendliness - Super-High Carbon	G