



St Andrews Heights, Sutton in Ashfield, NG17

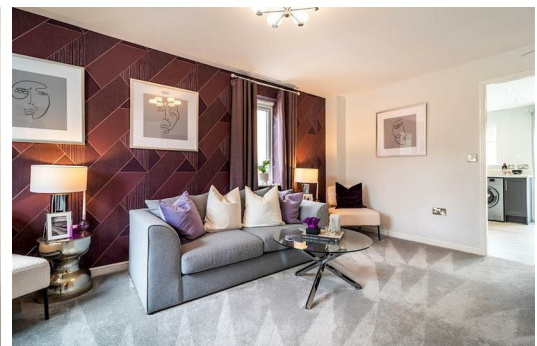
£1,075 PCM

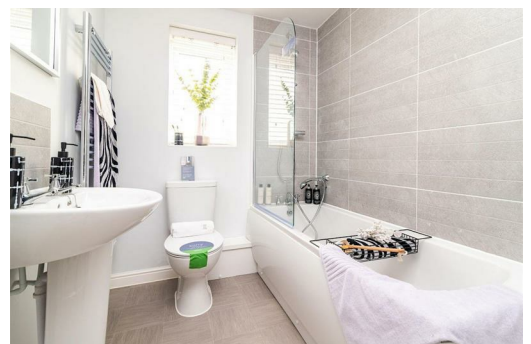
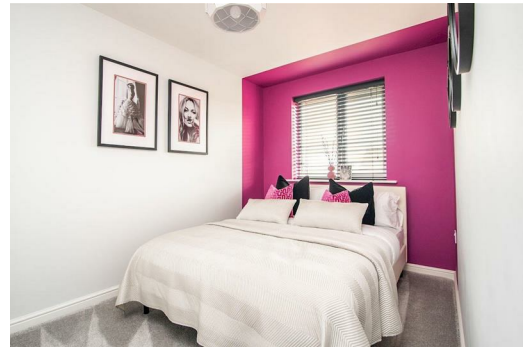
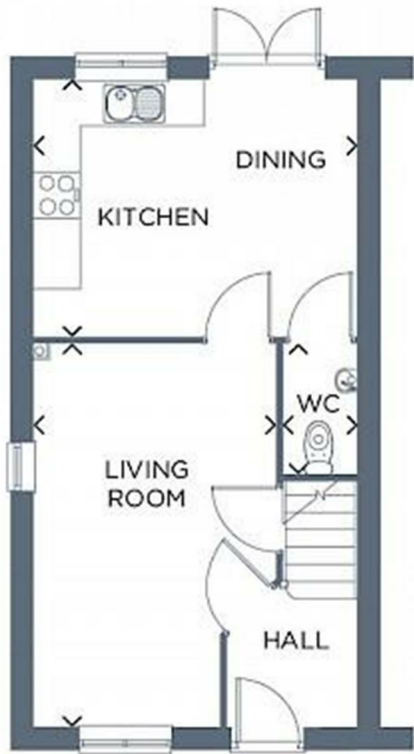
Welcome to this charming semi-detached house located in the desirable area of St Andrews Heights, Sutton in Ashfield. This property boasts a cosy reception room, perfect for relaxing or entertaining guests. With three lovely bedrooms, there is ample space for a growing family or for those in need of a home office or guest room.

The house features a well-maintained bathroom, ensuring convenience and comfort for all residents. Additionally, parking is made easy with space for one vehicle, making trips in and out hassle-free.

Nestled in a peaceful neighbourhood, this property offers a wonderful opportunity to create a warm and inviting home. Don't miss out on the chance to make this lovely house your own in the heart of Sutton in Ashfield.

Deposit: £1,240
Tenancy Length: 12 Months
Council Tax Band: TBA
Available Now





Energy Efficiency Rating		Environmental Impact (CO ₂) Rating	
Current	Potential	Current	Potential
84	96		
Energy Efficiency: 84 (Current), 96 (Potential) Energy Efficiency: A (Current), A (Potential)		Environmental Impact: G (Current), G (Potential) Environmental Impact: G (Current), G (Potential)	