



4 Ambleside Barns Reeds Lane Shipbourne, Tonbridge, TN11 9RR

£2,200

Discover this exquisite family home, thoughtfully designed and arranged over two spacious floors. Featuring two generously sized double bedrooms and a stylish family bathroom, this property combines modern living with comfort.

The ground floor boasts a breathtaking open-plan kitchen, dining, and living area, enhanced by bi-fold doors that seamlessly connect to the rear garden. Additional highlights include a convenient cloakroom/ WC and a welcoming entrance hall.

On the first floor, you'll find two spacious bedrooms, perfect for relaxation, alongside a contemporary family bathroom.

The property has a lovely lawned garden with a paved terrace, ideal for entertaining or enjoying sunny afternoons. Off-street parking is available for two cars.

This property is perfect for those seeking a modern, comfortable lifestyle in a fantastic location.

Council tax band to be confirmed - please discuss with agent.

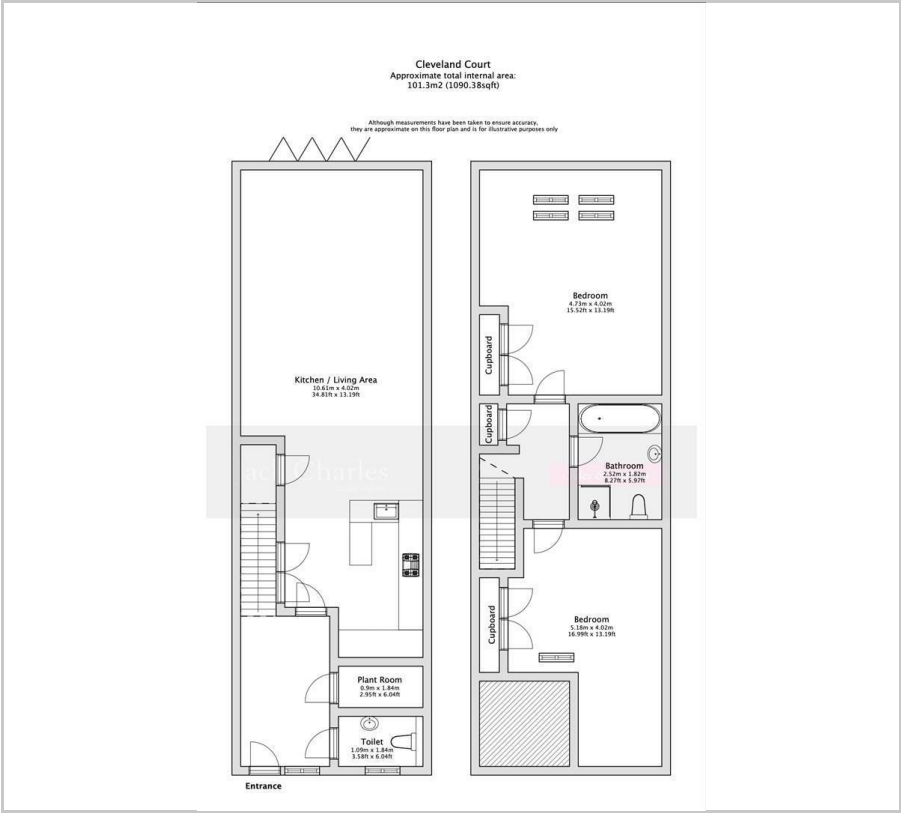
- Brand New Substantial Family Home
- Two Bedrooms
- Stunning Open Plan Kitchen / Family Room
- Spacious Hallway
- Cloakroom/WC
- Parking
- Garden
- Available now

Viewing

Please contact our Jack Charles Tonbridge Office on 01732 75 75 80 if you wish to arrange a viewing appointment for this property or require further information.



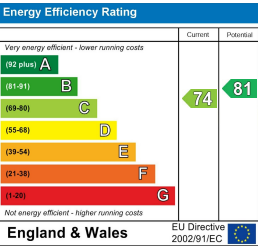
Floor Plan



Area Map



Energy Efficiency Graph



These particulars, whilst believed to be accurate are set out as a general outline only for guidance and do not constitute any part of an offer or contract. Intending purchasers should not rely on them as statements of representation of fact, but must satisfy themselves by inspection or otherwise as to their accuracy. No person in this firms employment has the authority to make or give any representation or warranty in respect of the property.