



## 2 Rosemary Place Maidstone Road Paddock Wood, Tonbridge, TN12 6DG

£1,750 Per month

Jack Charles are delighted to offer TO LET this three-bedroom family home with space that extends over three floors. This property is in an ideal location of Paddock Wood just minutes' walk to the main line train station into London. Offering 2 bedrooms to the first floor and a master bedroom with walk in cupboard and en-suite bathroom to the top floor. This home offers a low maintenance garden and 2 parking spaces to the rear as well as integrated kitchen with dining area. Internal viewing is highly recommended.

Available 2 May 2025

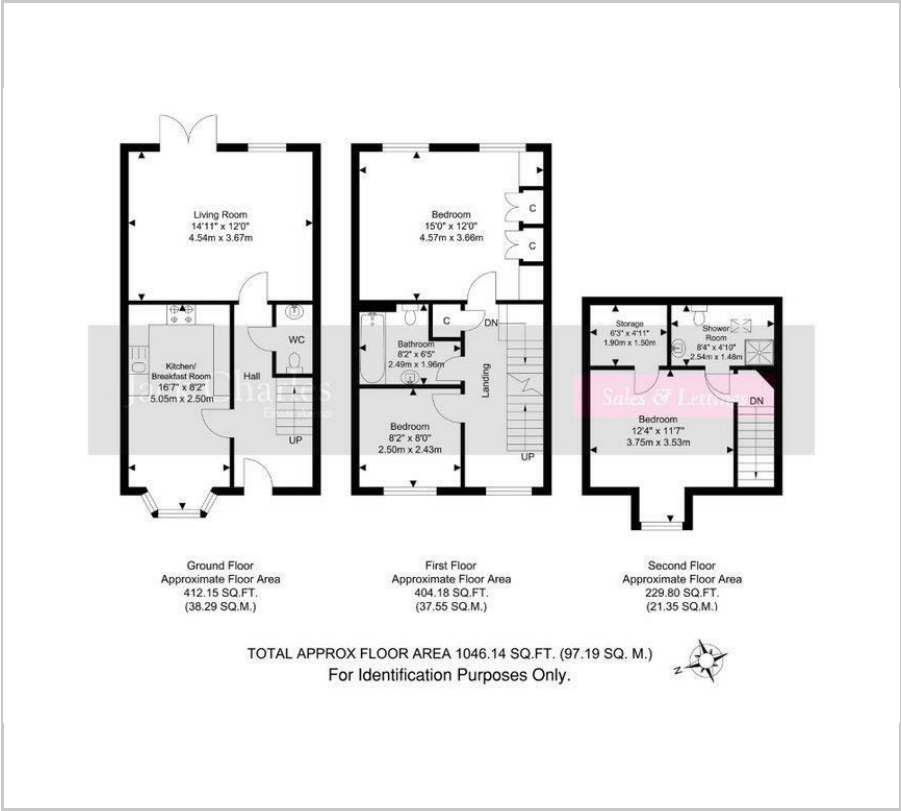
### Viewing

Please contact our Jack Charles Tonbridge Office on 01732 75 75 80 if you wish to arrange a viewing appointment for this property or require further information.

- Town house
- Three bedrooms
- Master bedroom with en-suite
- Kitchen/dinning room
- Two parking spaces
- Walking distance to MLS
- Lounge with patio doors
- Enclosed rear garden
- Gas central heating
- Available 2 May 2025



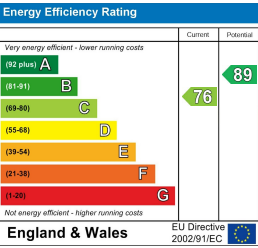
Floor Plan



Area Map



Energy Efficiency Graph



These particulars, whilst believed to be accurate are set out as a general outline only for guidance and do not constitute any part of an offer or contract. Intending purchasers should not rely on them as statements of representation of fact, but must satisfy themselves by inspection or otherwise as to their accuracy. No person in this firms employment has the authority to make or give any representation or warranty in respect of the property.

t: 01732 75 75 80 | e: tonbridge@jackcharles.co.uk | www.jackcharles.co.uk

Registered in England and Wales Company Number: 12336461 | Registered office: Castle Lodge, Castle Street, Tonbridge, TN9 8BA