



102 Berry Meade, Ashted, KT21 1SG
Guide price £550,000

 3  1  1  D

NO ONWARD CHAIN

A charming semi-detached family home with awesome potential to extend and improve (stpp), set in a quiet residential road in sought after Ashted Village, moments from The Greville Primary School and within comfortable reach of the mainline station, local shops and some of the area's most beautiful green and wooded spaces.

The current ground floor layout includes a good size and welcoming hallway with fitted storage cupboard and the potential to add storage under the stairs, a downstairs toilet, fitted kitchen with direct access to the garden, a formal dining space and a dual aspect living room, which also links back to the hallway.

Stairs give way to the first floor landing, incorporating a deep airing cupboard. There are three really well proportioned and characterful bedrooms, all with lovely views over the neighbouring gardens, all of which are serviced by a light and bright family bathroom. There is also access to a good size loft space via one of the bedrooms, providing excellent additional storage.

The rear garden has been lovingly established over many years and has been subdivided to include a paved patio area with secure gated side access to the front of the dwelling and a bonus brick built workshop. There is a good size lawn section with adjacent path leading to a rear paved area and a greenhouse. The borders and several middle sections are planted with a variety of shrubs, bushes and plants, giving the garden a pleasant diversity, which can be enjoyed all year round.

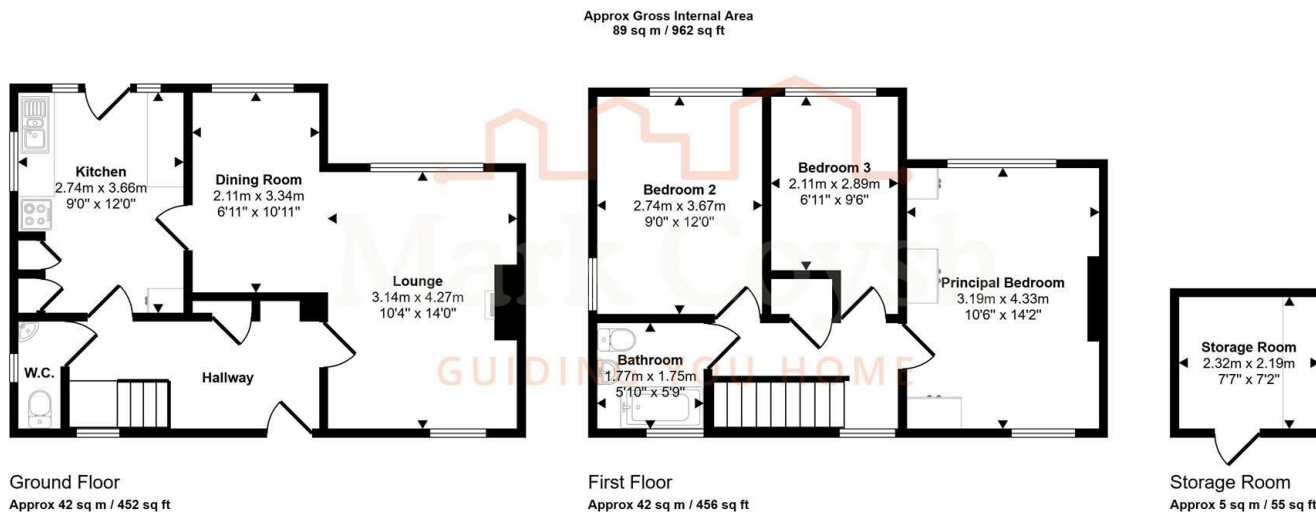




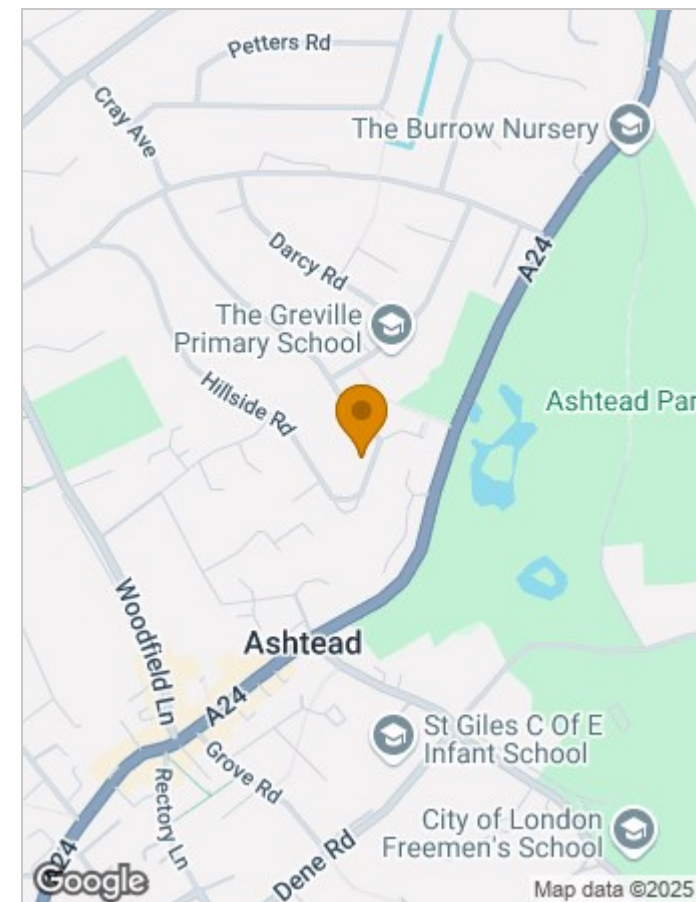
The property provides a great size frontage, already supplying off street parking, however, this could be added to if necessary.

Berry Meade is only a short distance to the shops on Craddocks Parade, two doctors surgeries, multiple dentists, three cosy pubs, coffee shops, the M&S Foodhall, several eateries and Junction 9 of The M25. There are many more most excellent schools, both public and state, which currently find themselves in huge demand for places.





This floorplan is only for illustrative purposes and is not to scale. Measurements of rooms, doors, windows, and any items are approximate and no responsibility is taken for any error, omission or mis-statement. Icons of items such as bathroom suites are representations only and may not look like the real items. Made with Made Snappy 360.



Viewing

Please contact our Mark Coysh Office on 01372 303703 if you wish to arrange a viewing appointment for this property or require further information.

These particulars, whilst believed to be accurate are set out as a general outline only for guidance and do not constitute any part of an offer or contract. Intending purchasers should not rely on them as statements of representation of fact, but must satisfy themselves by inspection or otherwise as to their accuracy. No person in this firms employment has the authority to make or give any representation or warranty in respect of the property.

