



**48 Taylor Road, Ashted, KT21 2HY**  
**Guide price £650,000**



A fantastic sized semi-detached family home which has been extended to the rear and loft converted, located in the heart of the charming village of Ashtead.

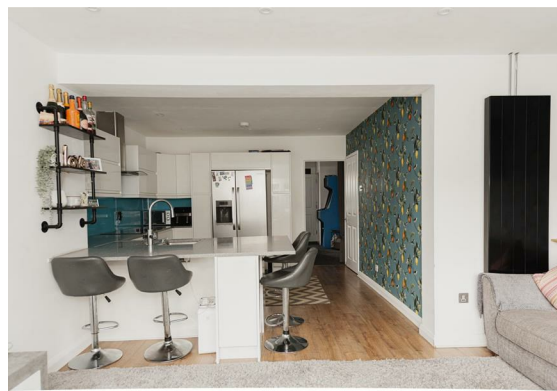
The ground floor layout comprises of an entrance porch, inner hallway, good size living room with under stair storage cupboard, downstairs shower room and spacious open plan kitchen/dining/family room with bi-folding doors leading onto the garden.

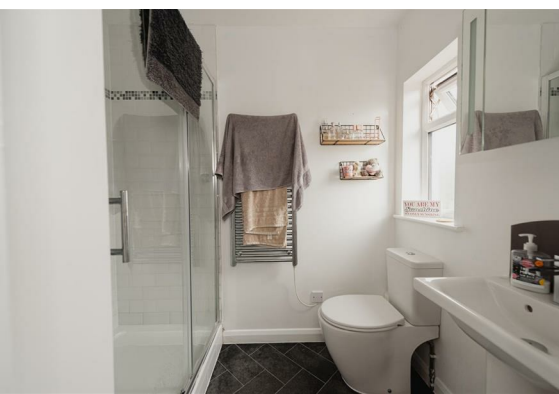
The first floor holds three very well proportioned bedrooms and a family bathroom.

The principle bedroom is on the second floor, incorporating an en suite bathroom, eaves storage and enjoys splendid far reaching views.

The rear garden includes a lengthy lawn, paved patio area, a fantastic multi purpose outbuilding with power and light, a raised deck with pergola, space for a shed and handy side access to the front of the residence where there is off street parking for approx two cars.

Taylor Road enjoys close proximity to the mainline station, multiple sought after schools, the local shops and amenities and the areas beautiful parks, commons and woodlands. Junction 9 of the M25 is also just a short drive down the road, giving great connectivity to Gatwick and Heathrow Airports, as well as the A24, A3 and A217, linking both to London and deeper into the countryside/coast.







Taylor Road, Ashted  
 Total Area: 135.8 m<sup>2</sup> ... 1462 ft<sup>2</sup> (excluding outhouse)

FOR ILLUSTRATIVE PURPOSES ONLY:  
 Whilst every attempt has been made to ensure the accuracy of the floor plan shown, all measurements, positioning, fixtures, fittings and any other data shown are an approximate interpretation for illustrative purposes only and are not to scale.  
 No responsibility is taken for any error, omission, mis-statement or use of data shown.  
 The above statement applies to both 'Stills Moving London LTD' and the Company or individual displaying this floor plan.  
 Unauthorised reproduction prohibited.

Ad Still Moving London LTD (www.stillmoving.london)



## Viewing

Please contact our Mark Coysh Office on 01372 303703 if you wish to arrange a viewing appointment for this property or require further information.

These particulars, whilst believed to be accurate are set out as a general outline only for guidance and do not constitute any part of an offer or contract. Intending purchasers should not rely on them as statements of representation of fact, but must satisfy themselves by inspection or otherwise as to their accuracy. No person in this firm's employment has the authority to make or give any representation or warranty in respect of the property.

