



18 Heymede, Leatherhead, KT22 8PG
Guide price £950,000

 4  2  2  C

A four bedroom family home set on the "much desired" south side of Leatherhead. Having recently undertaken a total refurbishment comprising of rewire, installation of central heating system, windows, doors and internal doors. Flooring throughout. Newly fitted kitchen, utility and bathrooms. Driveway and garden patio areas. Whilst still offering development opportunities (stpp). A further recent addition was the air conditioning to the living room and bedroom one.

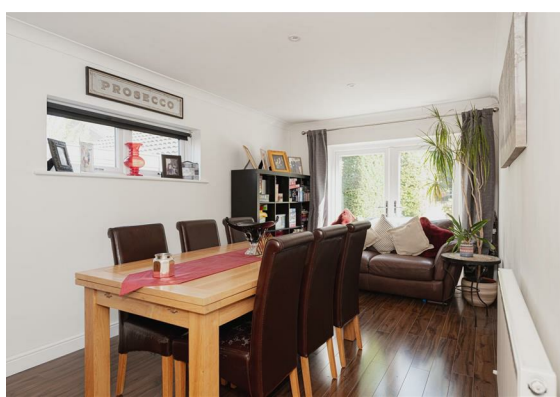
Each of the four bedrooms come with built in wardrobes and conveniently the house itself has an abundance of storage. Family bathroom, en-suite to the principle bedroom and downstairs WC.

The residence has a large lounge with feature fireplace, separate formal dining room and an eat-in kitchen/breakfast room.

The landscaped rear garden is a particular feature, offering a large degree of seclusion and privacy, plenty of established plants and shrubs and a number of terraces for entertaining and enjoying the sun.

To the front of the property there is an attached double garage and driveway providing parking for a number of vehicles.

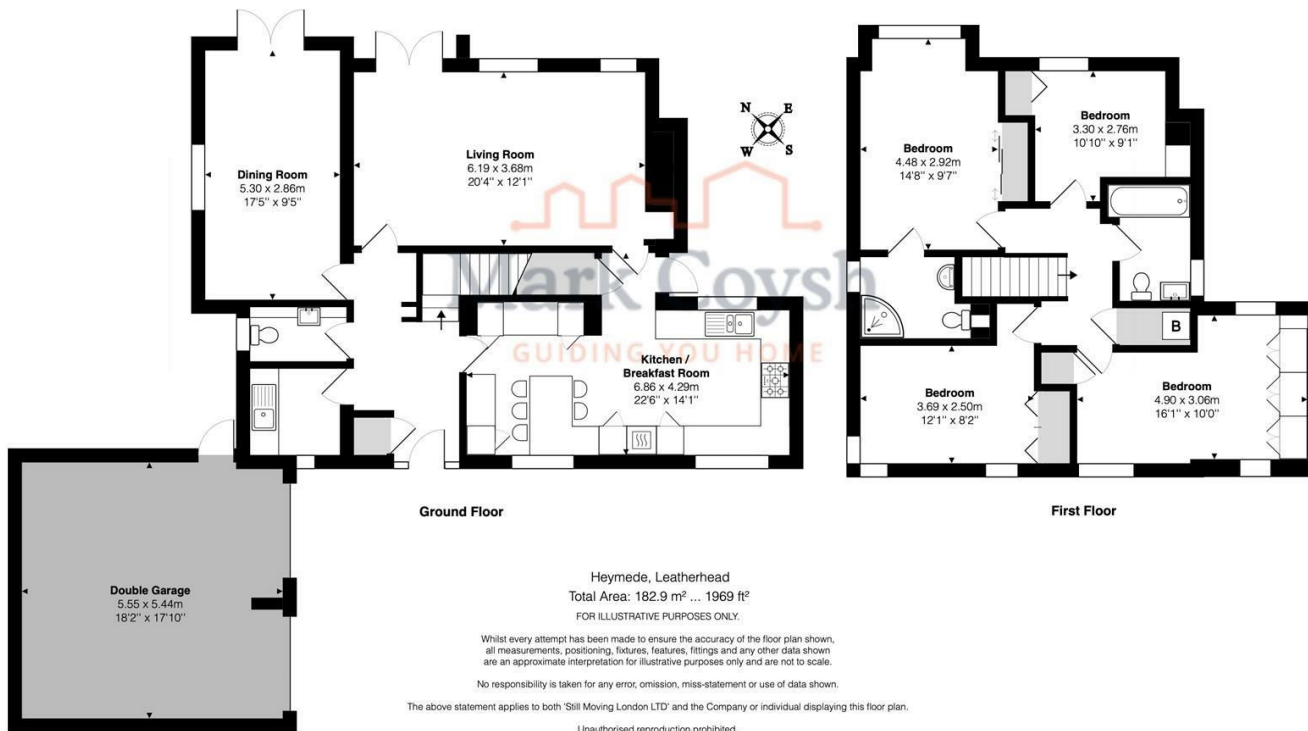
The current owners enjoy walking into the town, where some beautiful views of Norbury Park and beyond can be enjoyed. The town itself has a great selection of shops including a Waitrose, Sainsbury's and Lidl, as well as plenty of independent traders and a frequent market. Schools locally are well regarded and there is a good selection to choose





from. The mainline station is easily accessible, as well as a vast road network, including access to junction 9 of the M25, A3, A217 and A24. Gatwick and Heathrow Airports are also mercifully close after a long travel. For outdoor pursuits you are spoilt for choice, with plenty of walking and cycling opportunities at some of Surrey's most splendid areas of natural beauty.





Ground Floor

First Floor

Heymede, Leatherhead
 Total Area: 182.9 m² ... 1969 ft²
 FOR ILLUSTRATIVE PURPOSES ONLY.

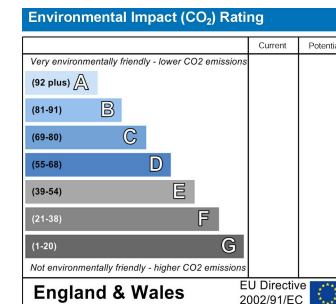
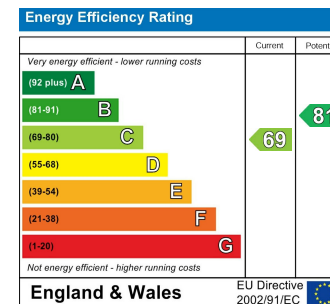
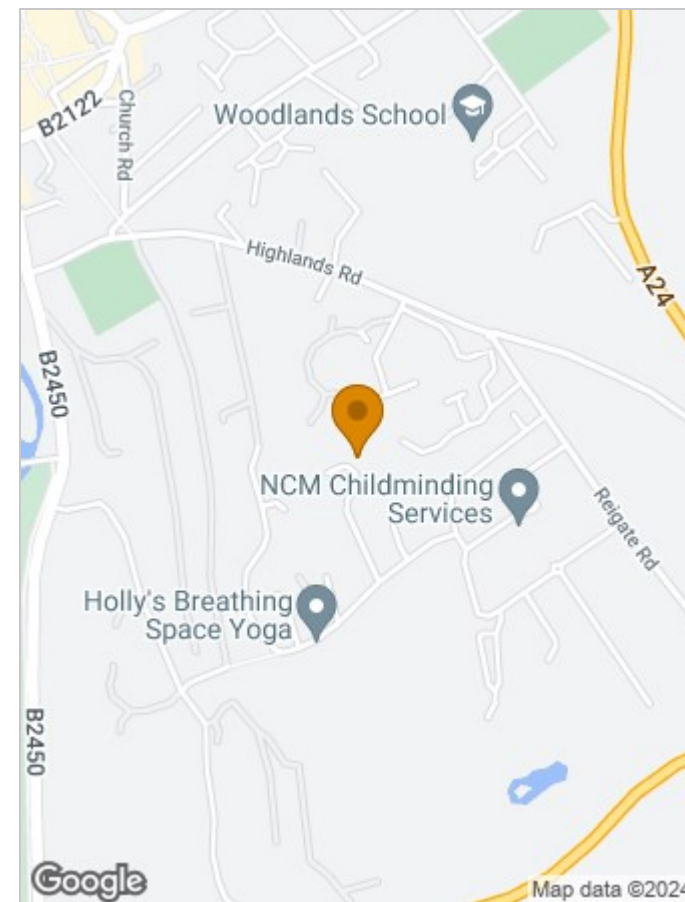
Whilst every attempt has been made to ensure the accuracy of the floor plan shown, all measurements, positioning, fixtures, features, fittings and any other data shown are an approximate interpretation for illustrative purposes only and are not to scale.

No responsibility is taken for any error, omission, miss-statement or use of data shown.

The above statement applies to both 'Still Moving London LTD' and the Company or individual displaying this floor plan.

Unauthorised reproduction prohibited.

© Still Moving London LTD (www.stillmoving.london)



Viewing

Please contact our Mark Coysh Office on 01372 303703 if you wish to arrange a viewing appointment for this property or require further information.

These particulars, whilst believed to be accurate are set out as a general outline only for guidance and do not constitute any part of an offer or contract. Intending purchasers should not rely on them as statements of representation of fact, but must satisfy themselves by inspection or otherwise as to their accuracy. No person in this firm's employment has the authority to make or give any representation or warranty in respect of the property.