



Evergreen Way , Hayes, UB3

£1,650 Per month

**** AVAILABLE NOW **** Two bedroom first floor apartment to rent situated within a quiet residential area. The property is arranged over 555 sq ft and comprises of an entrance hallway, living room, kitchen, two double bedrooms and a bathroom. Outside are communal gardens and parking for one vehicle. The property is available now and comes part furnished.

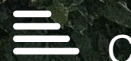
Situated in a highly desirable location, this flat benefits from proximity to various amenities, including shops, restaurants, and transport links. It is ideally positioned for easy access to the local area and beyond.

PLEASE NOTE: YOU WILL NEED TO BE ABLE TO MOVE IN JUNE IF YOU WANT TO VIEW THIS PROPERTY.

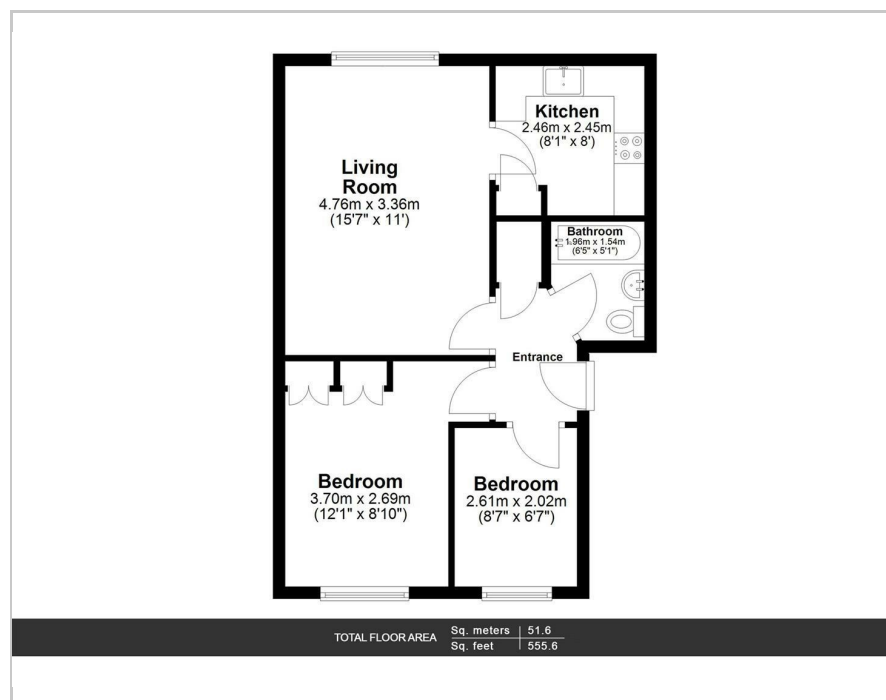
- Two Bedroom Apartment
- Available Now
- Parking
- Close to Amenities
- Part Furnished

Viewing

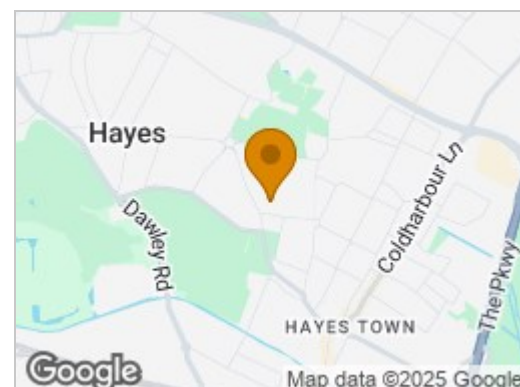
Please contact our Intra Capital Estates Office on 0207 183 6676 if you wish to arrange a viewing appointment for this property or require further information.



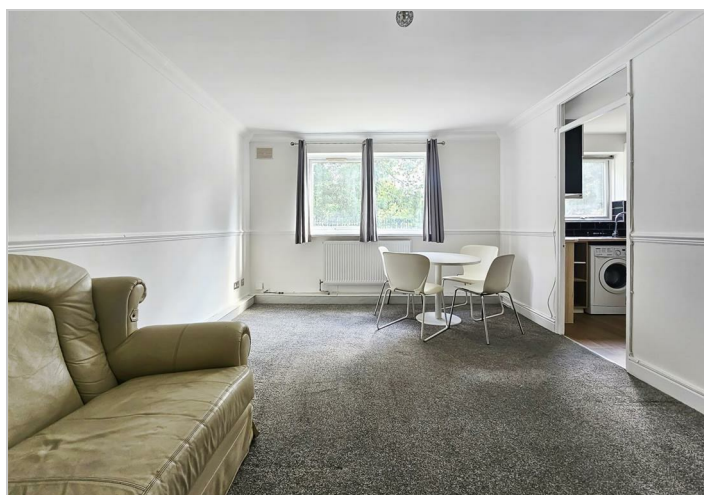
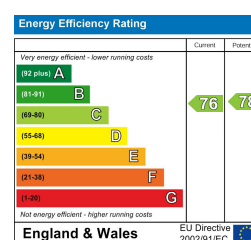
Floor Plan



Area Map



Energy Efficiency Graph



These particulars, whilst believed to be accurate are set out as a general outline only for guidance and do not constitute any part of an offer or contract. Intending purchasers should not rely on them as statements of representation of fact, but must satisfy themselves by inspection or otherwise as to their accuracy. No person in this firm's employment has the authority to make or give any representation or warranty in respect of the property.

INTRA-CAPITAL ESTATES

Paddington Works, 8 Hermitage Street, London, W2 1BE

Tel: 0207 183 6676 Email: info@intra-capital.co.uk

www.intra-capital.co.uk

Intra-Capital Estates is a trading name of Intra Capital Estates Limited, a private limited company registered in England and Wales.
Registered number: 11840422. VAT registration number: 31763281. Registered office Paddington Works, 8 Hermitage Street, London, W2 1BE.

MODERN APPROACH
TRADITIONAL VALUES

