



Wellington Road , Pinner, HA5

£2,200 Per month

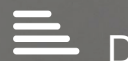
Two bedroom maisonette situated on quiet residential street in Pinner, HA5. Accessed from the ground floor, the accommodation is arranged over approx. 665 sq ft and comprises of an entrance hallway with stairs to first floor, two double bedrooms, living room, kitchen and shower room with WC. The property is available from late October and comes unfurnished.

Local Authority: Harrow
Council Tax Band: C
Minimum Term: 12 months
Deposit Required: 5 weeks
Furnishing: Unfurnished

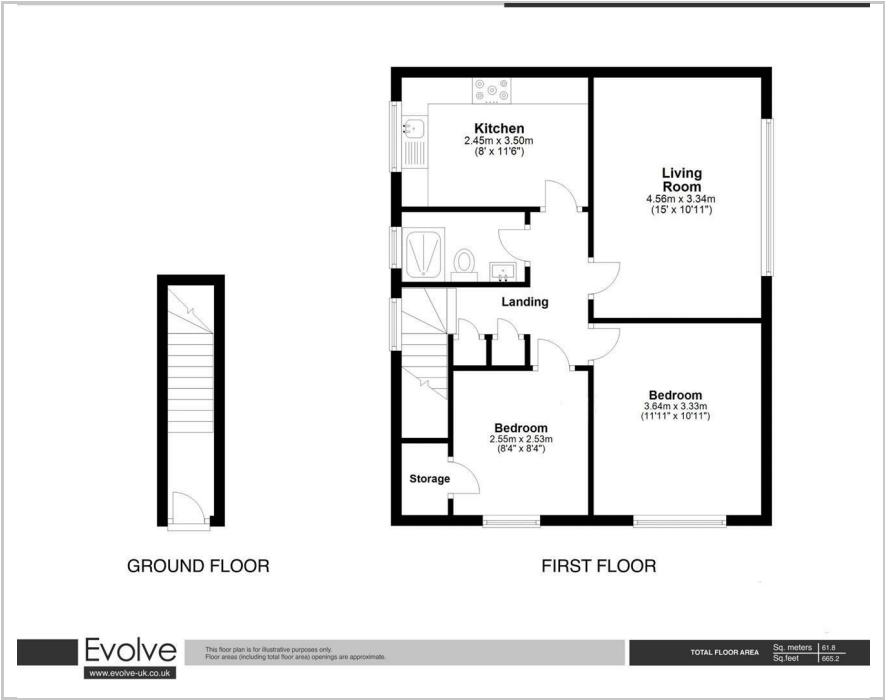
- Two Bedroom Maisonette
- First Floor (Top)
- Close to Amenities
- Unfurnished
- Available Immediately

Viewing

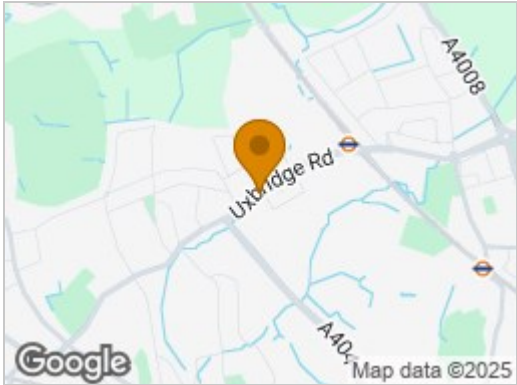
Please contact our Intra Capital Estates Office on 0207 183 6676 if you wish to arrange a viewing appointment for this property or require further information.



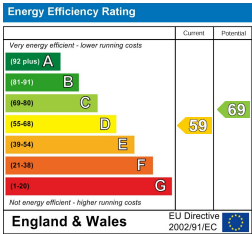
Floor Plan



Area Map



Energy Efficiency Graph



These particulars, whilst believed to be accurate are set out as a general outline only for guidance and do not constitute any part of an offer or contract. Intending purchasers should not rely on them as statements of representation of fact, but must satisfy themselves by inspection or otherwise as to their accuracy. No person in this firm's employment has the authority to make or give any representation or warranty in respect of the property.

INTRA-CAPITAL ESTATES

Paddington Works, 8 Hermitage Street, London, W2 1BE
Tel: 0207 183 6676 Email: info@intra-capital.co.uk
www.intra-capital.co.uk

Intra-Capital Estates is a trading name of Intra Capital Estates Limited, a private limited company registered in England and Wales.
Registered number: 11840427. VAT registration number: 31763281. Registered office Paddington Works, 8 Hermitage Street, London, W2 1BE.

MODERN APPROACH
TRADITIONAL VALUES

